

The Neighborhood Bridge

April
2006

T y l e r P a r k N e i g h b o r h o o d A s s o c i a t i o n

Winter/Spring 2006 Newsletter

Tyler Park Easter Egg Hunt Saturday, April 15th at 12:00 Noon

Come meet the Easter Bunny at this year's Annual Tyler Park Easter Egg Hunt. There will be four age divisions - 0-3 years, 4-6 years, 7-10 years and 11-12 years - each with its own designated area for egg hunting. Special prizes will be awarded by age group. If you would like, bring your camera to capture a photo of your child with the Easter Bunny.

Please note that the candy at the event is not certified as peanut-free, so be careful if your children have any food allergies.

Hop to see you there!

www.tylerpark.org

Check out our neighborhood's new web site! Although it's just beginning development, it contains information about neighborhood boundaries, joining the neighborhood association, a neighborhood map and links to local and state resources. If you have any ideas about what you would like to see on the web site, please email them to info@tylerpark.org

Front Porch Tuesdays

2006 is the second year for Council Member Tom Owen's event called Front Porch Tuesdays. On May 16 (even numbered houses visit the odd numbered porches) and May 23 (odd numbered houses visit the even numbered porches), you may have the chance to meet neighbors you haven't encountered before and to reconnect with ones you haven't seen in a while. Last year, residents in our neighborhood participated and had great fun in the process. Please see www.frontporchtuesdays.org for more information and contact a TPNA board member (or email info@tylerpark.org) if you would like a sign for your yard.

First Annual Tyler Park Garden Tour

Save the date! Saturday, June 24, from 10 am to 3 pm, plan to attend the first annual Tyler Park Garden Tour. (Rain date is Sunday, June 25.) We hope to have 10 to 12 gardens open for viewing.

If you are interested in having your garden on tour or know of an interesting garden, let us know! The garden need not be professionally landscaped - only neat, pretty, and accessible.

Neighborhood residents who would like to work on this committee are encouraged to get involved now. Possible areas for your volunteer contribution are publicity, ticket printing and sales, program layout and printing, liaison with businesses, and ticket-taking day of tour. Call Jeanette Westbrook (451-8207) or Terry Redden (454-5795) for information.

Shopping for Men

Shopping for men's clothing and accessories in the Highlands can be difficult. But if you are tired of making that trek out to the mall, Tyler Park has a few great new additions, as well as some old standbys, that can make shopping close to home a lot more fun.

The newest entry for men is Fung Shway at 1382 Bardstown Rd (473-2011). Owner Theresa Carraro Ray has added the sophisticated Ben Sherman line for men to her store, and the look is perfect for the Tyler Park lifestyle. Ben Sherman is simultaneously trendy and retro and extremely affordable as well.

Kopilot, at 1414 Bardstown Rd (451-3698), has t-shirts, track jackets and men's accessories in their usual inimitable hip style. They can also do custom silk screening if you want to become your own designer.

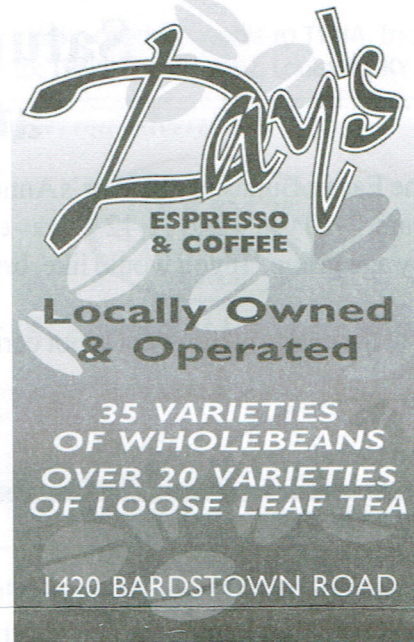
And for shoes, Second Step, newly arrived in the Mid-City Mall (452-1232), has everything from tennis shoes to dress shoes. Also in the Mid-City Mall are long-time favorites the Jewel Box (458-3715) for men's watches and jewelry, the Family Dollar (451-3421) with men's active wear and furnishings, and of course, Nearly New (454-6633) which is the perfect place to find, well, just about anything.

Next time you need men's clothing or accessories, don't drive out to St. Matthews. Try shopping locally. You will be pleasantly surprised!

By Greg Garner, TPNA Board Member

TPNA Board Meetings

The Tyler Park Neighborhood Association meets the fourth Thursday of each month (except Nov. & Dec.) from 7:00 to 9:00 at the Highlands/Shelby Park branch of the Louisville Free Public Library inside Mid City Mall. All neighborhood residents and business neighbors are welcome to attend.



Did you know that operating a typical (4-HP) gasoline-powered mower for one hour produces the same amount of smog-forming hydrocarbons as driving an average car almost 200 miles under typical driving conditions?

Get the full story elsewhere in this issue and learn what you can do to improve our air quality.

Adult Day Services

Do you know someone in need of Adult Day Services? Highlands Community Ministries Adult Day Health Center provides supervised care for older persons with Alzheimer's and or other illnesses. HCM Adult Day Health Center works to:

- Promote the individual's maximum level of independence.
- Maintain or improve the individual's present level of functioning, delaying further deterioration.

- Provide support, respite and education for families and other caregivers.
- Foster socialization and peer interaction.

HCM Adult Day Health Center also has a Caregiver's Day Out Program designed to be short-term, temporary care OR for persons who do not choose to enroll in the regular program.

Open Monday-Friday, 8:00a.m.-5:00p.m. For more information please call Mary Lynne Masterson, Director, at (502) 459-4887.

A Different Kind of Summer In Your Yard?

Are you interested in trying a different approach to lawn care that would mean less work and/or less pollution while providing more beauty and wildlife habitat in your yard or corporate lawns?

Join the Air Pollution Control District's **Lawn Care for Cleaner Air** program and see how you can make changes that save you time and money, benefit air quality and the quality of your life.

"Lawn Care for Cleaner Air" includes various types of landscaping that can visually enhance your yard with minimal use of gasoline-powered equipment such as lawn mowers, string trimmers, and leaf blowers. There are many alternatives to turf grass, such as shrubs and trees, perennials and native plants, ground covers and decorative grasses, rock gardens, Japanese-style gardens; the list goes on and on.

Other alternatives to gasoline-powered lawn maintenance equipment include these lawn maintenance options, and **Jefferson County residents can receive a rebate for up to \$100 for switching to cleaner mowing options:**

- Ø **Corded or battery-operated electric mowers, for larger lots:** The newer cordless electric mowers, including robot mowers, have a battery pack that is plugged into an electrical outlet to charge, then plugged into the mower when you are ready to mow.
- Ø **Reel (mechanical) mowers, for smaller lots:** The newer reel mowers are light in weight, and have self-sharpening blades.
- Ø **Electric string trimmers and leaf blowers,** corded or with batteries do a great job of keeping your yard neat and well trimmed.

More and more property owners all over the U.S. are choosing to re-landscape, eliminating much of the grass that must be mowed. In its place, plants that need little water and maintenance may be chosen, to give your green space special appeal, whether it is a cool, restful shady sitting area, or a riot of color from your favorite wildflowers and perennials. Large spaces may support islands of trees and shrubs tied together with mulch or native grasses with wildflowers mixed in, while small spaces may call for ground cover, shrubs, trees, and tiny flower beds. Personalize your green space to meet your family's needs. Grass for kids to play on may be incorporated into either of these landscapes, but you may find that your children prefer the more interesting and varied landscapes.

Imagine a child's tea party among Dutchman's breeches, Virginia bluebells, hostas, ground covers, shrubs and trees, instead of grass!

Too much trouble, you say? Yes, it may take a while to get your new landscape transformed from turf, but you can start now with a small strip, an island or a border around your yard with low-maintenance plants. Every year, do a little more, until you have a different and exciting landscape.

Don't know how? Last year APCD sponsored a Low-Maintenance Landscaping Design Competition. Winning landscapes from this competition are on the APCD website, www.apcd.org/lawncare, and they are free for you to use or get ideas to transfer to your own landscape, including suitable plants. Contact your Cooperative Extension Office for information on gardening and low-maintenance landscaping. (in Jefferson County, the number is 569-2344.) Ask your gardening friends for ideas. You will be surprised how glad they are to share plants and spread the gardening message! There are many good landscaping contractors who can design a low-maintenance yard that you can install—or have them install—at your own pace.

Too expensive? Think about it: if you pay to have your lawn mowed, what do you spend in a month? A season? In 5 years? An investment in low-maintenance landscaping will pay itself off in a relatively short time in savings on seeding, fertilizing mowing, raking, and chemical lawn treatments.

Too time consuming? Add up the hours you spend sowing grass seed, fertilizing, weeding, mowing, trimming, and then raking the leaves in the fall. "Pay" yourself for your time, just as you get paid for your job, then calculate what this job of tending turf is costing you. It may make new landscaping seem inexpensive, by comparison.

Then there are the other benefits: the beauty of a nicely landscaped yard, reduction in the amount of harmful chemicals spread on the grass *where your children and pets play*, less watering when you choose drought-resistant plants, the wildlife you invite to your yard with alternative landscaping, and the extra time you will have to devote to things you *really* want to do.

Here's how to start: Call APCD at (502) 574-5322 or check out our web page on lawn care: www.apcd.org/lawncare for more information. Find out how you can win the Lawn Care for Cleaner Air award for minimizing the use of gasoline-powered equipment. You can also get information on rebates up to \$100 for electric or battery-powered lawn mowing and maintenance equipment. **It all adds up to cleaner air!**

Changes are Coming to ValuMarket

ValuMarket came to Mid-City Mall a few months ago, and soon you will see big changes at our neighborhood grocery store. Store manager John Bizzell recently outlined all the plans for Tyler Park neighborhood shoppers. The cosmetic upgrades throughout the store will bring all new flooring, ceiling tiles, fresh paint and décor on all surfaces and completely gutted and remodeled restrooms. All of the shelving will be replaced and upgraded along with all new upright freezer and refrigerator cases, allowing for more merchandise and variety.

The Bardstown Road entrance is going to be moved to the north a bit, to line up better with the front of the mall. The checkout stands will move to that side of the store, along with new windows. Produce will move to the mall side, with glass garage-door type openings to allow the store to open fully onto the mall and add some seating. The produce department will be significantly larger, with more ethnic and organic produce. Talks are underway to stock locally grown fruits, veggies, greens and herbs. Fresh squeezed orange juice will be offered on a regular basis.

The deli section will double in size. Be looking for a coffee service, build-your-own salad bar, soup bar and additional hot prepared foods from local caterers. Great Harvest and Blue Dog bread have already been added. Talks are also underway with local bakeries to expand the dessert section. Marvelous cakes available now, and cookies, pies and other items are coming soon. The St. Matthews take-out favorite – Tologono – is already providing several entrees and side dishes and the Highlands standby, The Bristol Bar and Grill, will be providing soups, sauces, and frozen appetizers. With the success of those items, more vendors are anticipated to be on the way. The specialty cheese counter will be competitive with any in the area.

The meat department will undergo a thorough revamping. The wall behind the cases will be removed, opening the view into the cutting area and providing service counter space. The staff of meat cutters will be more available for custom meat trimming and slicing. ValuMarket will incorporate a Seafood Connection franchise and will have a service seafood case to offer fresh fish and frozen seafood.

A beer cave will showcase three times the selection of brands. The floral department will be much larger and a florist is already in-store twice a week to work personally with customers. (ValuMarket did the flower arrangements at the recent wine and cheese event at the mall, and they were delightful.) The remodeled store will offer a wide range of natural foods as well as the best of Iroquois' authentic ethnic groceries, the pride of ValuMarket at Iroquois Manor.

New to the Highlands area is online grocery shopping through ValuMarket's Curbside Direct. Just go to www.valumarket.com and click on the "Shop Online" link. Pick the Highlands ValuMarket location and shop from the same selections you would in our store from the comfort of your home or office. The online store gives you pictures, descriptions, and the same pricing you would get in our store. Submit your order, choose your pick up time, pull up to the curb, and we will load your car. You don't even have to get out of the car. ValuMarket's Curbside Direct Service began on March 12th.

The changes are expected to start the first of April, and should take about 4 months. John and the staff are eager to meet the needs of our neighborhood – so stop in to say hello and check out all the changes that are already in place. Our neighborhood grocery store just may become the destination grocery store of Louisville!

Newsletter Producer Needed – Badly!

The Tyler Park Neighborhood Association is seeking someone willing to produce its newsletter on a quarterly basis. As you can tell, someone not familiar with newsletter layout software or aesthetics has done this issue. Would you be willing to make a valuable contribution to your neighborhood by professionalizing its newsletter? Other people will write the articles and sell the ads; all you have to do is the layout work. Maybe this project could strengthen your resume, or at the very least make you the envy of all your neighbors.

If you think you might be able to help, please email the Tyler Park Neighborhood Association at info@tylerpark.org. Thanks!!!

Wine and Cheese Tasting

On Sunday January 29th, TPNA held its first Wine and Cheese Tasting. Our thoughts were to have a mid-winter event to get the neighborhood out and do a little socializing, and to show off some of the Mid City Mall merchants. We had a lovely warm-ish January afternoon with no snow, and the event was a very crowded success!

We can not give enough thanks to those merchants who helped us pull this event together. Please support these neighborhood retailers who helped make this such a fun and neighborly party.

The wine selections and matched cheeses were courtesy of the Wine Market on Lucia. There were nine wines from Spain, France and California - some reds, some whites and one sparkling. Prices ranged from \$8 to \$17 per bottle. Everyone we talked to had a different favorite! Glassware was also arranged for us by the Wine Market. Wine Market staff were on hand to describe the wines and cheeses. They are a marvelous asset to this neighborhood with their energy and knowledge of all things wine (and cheese!)

City Café was most kind in letting us use their café for lots of behind the scenes details, and they provided trays of their delicious dessert bars. None of those were left at the end of the evening!

ValuMarket put on quite a show with some of the new items they are now carrying. As they are preparing for their big store remodel, they jumped at a chance to show the neighborhood some of the offerings from their deli, bakery and floral departments. A beautiful tiered cake was the centerpiece of their tables, with three different flavor layers and sugared fruit decorations. Prepared foods from the deli, along with selected cheeses, olives and paté were highlighted with striking rosebud arrangements on all the tables.

Mid City Mall let us use their interior space to hold the event. Baxter Avenue Theatres loaned us movie ropes (stanchions) to mark off the area in the mall. (Alcohol license requirements are very specific, we learned.) The Highlands-Shelby Park library branch loaned their coat rack. A lively variety of music was played by Duo Louisville.

Almost 200 neighborhood residents and their friends came to the tasting – almost all at the same time. It's been suggested that we hold another such event – and when we do, we'll certainly plan a bigger space! One person commented to a board member that there sure were a lot of people named "Rosewood" at the party – she asked if they had met any of the "Tyler Parkways!" All of the volunteers had a great time. It was a lot of fun to see neighbors getting acquainted for the first time, as well as all the re-acquaintances that happened.

If you have ideas for other such neighborhood events, please let any board member know or email the board at info@tylerpark.org

Living & Selling in your neighborhood



KENTUCKY
SELECT
PROPERTIES

Linda Clark

lclark@kyselectproperties.com

502.271.5109 direct line

502.552.4664 cell

1-866-770-3324 toll free

502.271.5001 fax

Browenton Place, Ste. 140

2000 Warrington Way

Louisville, Kentucky 40222

www.kyselectproperties.com



*I can make buying or selling
a home as easy as a walk
in the park...*

TPNA Contacts:

President: ----- Steve Thomas ----- 456-4467

Vice President: -- Greg Garner ----- 290-7330

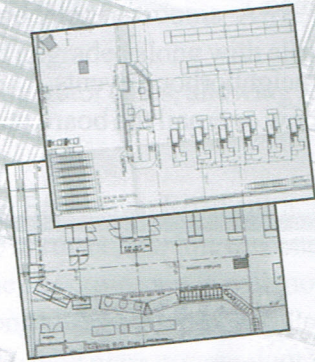
Treasurer: ----- Manny Carralero ----- 451-5198

Secretary: ----- Alan Linehan ----- 238-3131

VALU MARKET @ Mid City

We're making some major changes for you!

Please pardon our mess as we completely remodel the entire store to better represent the needs of the neighborhood!



We're striving to provide you with the most enjoyable shopping experience possible. We'll be adding new frozen and dairy cases, adding a beer cave, expanding the fresh produce section and making access to and from the mall easier! And we're moving the checkouts to the front of the store where they belong. Feel free to stop in and ask any store manager about what changes to expect! We'll be open throughout the remodel process, so you can watch the changes as they happen!

While the store will undergo a major overhaul, our prices will not. You'll still enjoy the savings you've come to expect from ValuMarket.

FIVE Convenient Locations!

1250 N. Bardstown Road in the Mid City Mall - **459-2221**
315 Whittington Parkway in the Hurstbourne Plaza - **423-7110**

7519 Outer Loop in the Outer Loop Plaza - **239-7375**

5301 Mitscher Avenue in Iroquois Manor - **361-9285**

205 Oakbrooke Drive, Mt. Washington, KY - **955-9563**



Shop Online @ www.ValuMarket.com

Home Notes from Linda

Do you know if your home has a high level of radon? It can be found in any home, not just new homes with basements. It can even be found in homes with crawl spaces and homes built on slabs as well. As a realtor, I always advise my buyers to have the home they are purchasing tested. It has been found at unsafe levels in several Highland homes I have sold.

You may be asking what is radon? Radon is a gas formed by decaying uranium in the ground. It is odorless and high levels can cause cancer. It is the second leading cause of lung cancer in the United States and Kentucky has one of the highest concentrations of radon in the country. The only way to know if you have an unsafe level in your home is to test. Fortunately, if you do, you can eliminate this problem through mitigation. The average cost of a professional radon test in the Louisville area is \$ 140.00. The cost to mitigate varies, but I would say the average I have experienced has been around \$1200. That is really a small price to pay for protecting your family from cancer.

For more information, check out the EPA's web site at <http://www.epa.gov/iaq/radon/pubs/hmbyguid.html>

You can also get a list of certified radon measurers and mitigators from the Jefferson County Health Department.

By Linda Clark, TPNA Board Member

Volunteers Needed for Park and Alley Cleanups

The Tyler Park neighborhood is seeking volunteers to help clean up alleys and clean out brushy areas in Tyler Park. We will conduct these cleanups four times a year. Metro government doesn't clean alleys and Metro Parks lacks the funds to do all the plant maintenance we would like to see in Tyler Park. If you could devote a few hours even once a year to improving our neighborhood this way, please contact any TPNA board member or send an email to info@tylerpark.org

Farmers' Market

The Bardstown Road Farmers' Market will be open April 1st through December, from 8am to 1pm. There will be four festivals featuring music and foods of the season: Mothers Day Festival May 14, Fourth Of July Picnic Festival July 1, Salsa Festival August 14, Fall Harvest Festival October 7. The market carries organic and non organic vegetables, fruits, mushrooms, herbs, plants, flowers, five varieties of meats, dairy and goat cheeses, plants, flowers, eggs, honey, baked goods, jams and salsas.

Please support our local producers and the vendors of their goods.

Advertise with Us

Neighborhood residents LOVE to support local businesses. Send an email to info@tylerpark.org to request our advertising rate sheet.

Wanted to Rent!

Single car garage space
for storage only - no repair work -
for a period of one year.
454-5795

jDesigns and Photographic Memory

Walking south on Bardstown Road, take a right immediately after St. James onto the long sidewalk leading to the sea foam colored door and you will have the pleasure of entering the world of two very creative fiber artists, Jan Malone Sowder and Lorese Harper. Jan and Lorese opened their shops last year at Bardstown Road Aglow. Jan owns and operates j Designs and Lorese owns and operates Photographic Memory. Berninas and babylock sergers (those are their machines) are buzzing in these workshops/gift shops.

The space is filled with Jan's home accessories, wearable art, clothing, memory quilts and bead woven jewelry with a contemporary flair AND Lorese's handcrafted assemblages and textile collages with a more vintage feel.

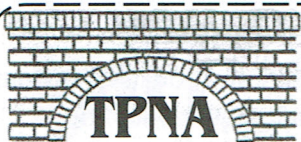
Both women have gift items for sale and both take custom orders. Jan, for example, has made a quilt out of tie collections and one out of wool coats even using the labels. At the same time you will find fabric bowls and intricately woven beaded bracelets for sale. Lorese will take a customer's pile of memories tucked away in the attic and creatively design them into a work of art. Grandma's broken watch, buttons, and handkerchief can end up being on a wall hanging, a pillow, a tote bag, or displayed in a hat bag, a sewing machine drawer or an old shoe shine kit. She also adds photos, documents, & letters (originals or transfers to fabric). Lorese was quick to assure me that it didn't have to be past memories, but "present moment" keepsakes like a wedding or an individual's favorite objects.

Lorese and Jan met many years ago while working at Baer's Fabrics. Lorese was all about the machines and Jan taught classes. Jan and Lorese speak of each other in the same way - creative, good energy, separate styles, but kindred spirits. Jan had a gallery in Jeffersonville and started looking for a place just to showcase and work on her own art. Fate led her to the Tyler Park neighborhood. "I wanted a place where people walked around rather than a strip mall type setting. I love the eclectic nature of Bardstown Road." Lorese was ready to get back at it full time after having a baby. Jan, after seeing the space, thought she could fill up the rented rooms or call Lorese. She called Lorese and the friendship developed a new edge.

Jan and Lorese are featuring "Totally Mailable Art Cards" for Spring birthdays, anniversaries, weddings, Derby parties, Mother's Day and Father's Day. You can purchase these one of a kind cards or bring your own photos and sentiments for a customized touch.

jDesigns and Photographic Memory is a local, walk-in, unique gift shop at 1436 Bardstown Road. The hours are by chance or appointment. Jan and Lorese are in the shop most days. When the sign is out at the sidewalk, stop by and visit our neighbors. To make an appointment or inquire about their work, please call Jan at 812-282-6903 or Lorese 502-548-5537.

By Joan Dubay, TPNA Board Member



JOIN YOUR NEIGHBORHOOD ASSOCIATION OR RENEW YOUR MEMBERSHIP TODAY

Name: _____

Address: _____

Apt #: _____ Zip: _____

Home Phone: _____

Business Phone: _____

Email: _____

Membership Type (Select One)

- Individual & Family \$7
- Business \$15
- Sponsor \$100

Make checks payable to TPNA, Inc.

Mail to: TPNA, PO Box 4452, Louisville, KY 40204

Help us with your thoughts

Major Neighborhood Concerns

- Beautification
- Crime
- Drainage
- Future Development
- Litter
- I would like to serve on a committee concerning _____
- I would like to work on the membership committee
- I would like to be on the Board of Directors

You can also email

your thoughts to info@tylerpark.org

Please support our advertisers!



"Where Your Sweetest Memories Begin..."

2112 Bardstown Rd. at Douglass Blvd
Louisville, KY 40205

Open Mon-Sat, 10am-6pm (502)452-9266

www.dundeeecandy.com



Louisville KY 40204-1315

1809 Windsor Pl

The French Family

*****AUTO**5-DIGIT 40204
3
3

Non-Profit
Organization
U.S. Postage
PAID
Louisville, KY
Permit #01549

Neighborhood
Association
P.O. Box 4452
Louisville, KY 40204

