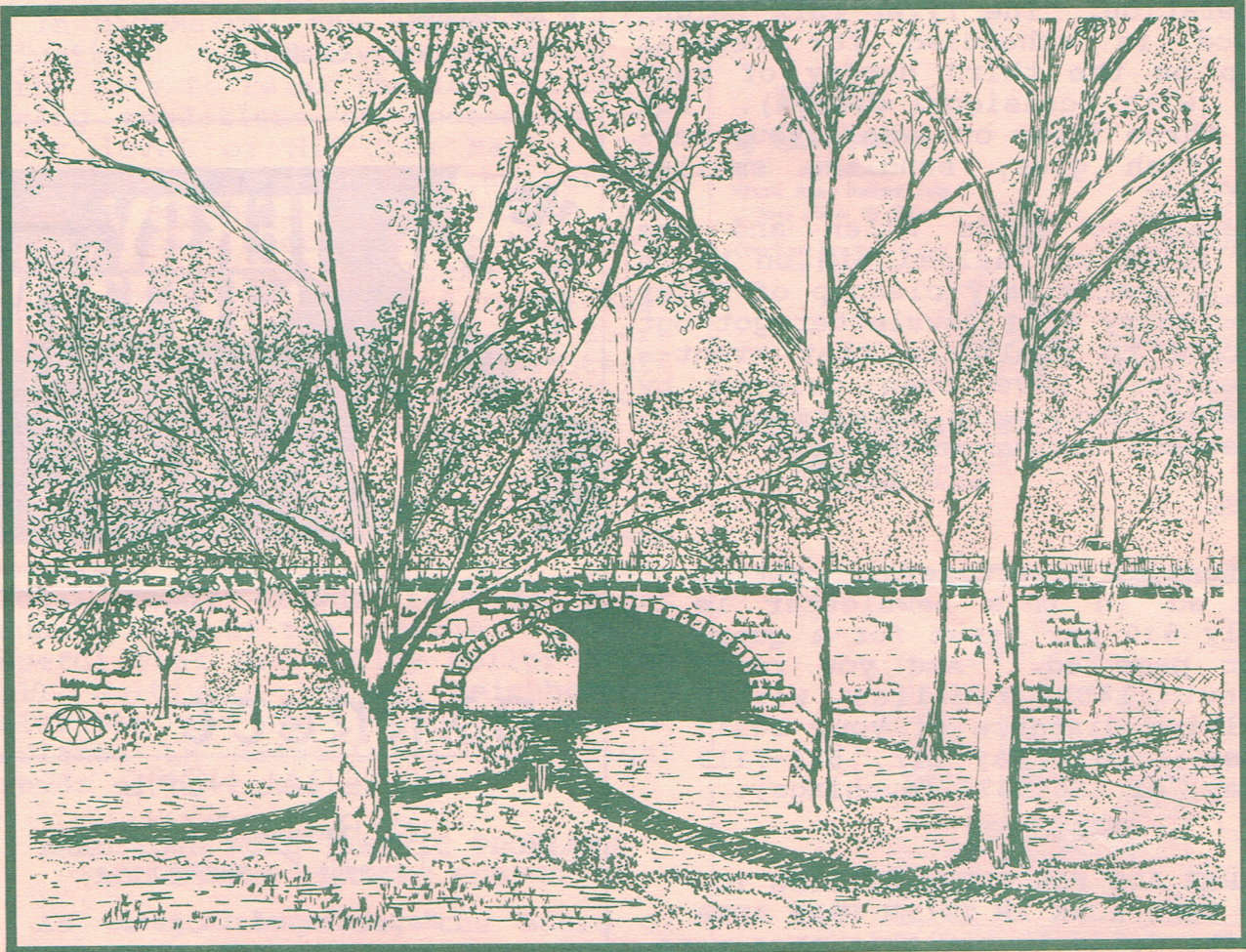


# TYLER PARK NEIGHBORHOOD ASSOCIATION NEWSLETTER

April, 1988



## NEW DIRECTORS AND OFFICERS ELECTED; NEW DIRECTORY ENCLOSED

At the Annual Meeting in November, members of TPNA, Inc. elected directors to two-year terms to replace directors whose terms expired in 1987. At its January meeting, the Board elected Bill Schneider as President, J.D. Denny as Vice President, Artus Fox as Secretary, and (relentlessly) Steve Henry as Treasurer. (Herb Zimmerman, president for the last two years, has graciously agreed to stay on the Board as Government Liaison, while Joan Dubay, last year's vice president and Park Enrichment chair, is taking some richly deserved time off.) We are again fortunate to have such a diverse, energetic group of directors and officers. The first few Board meetings have been enthusiastic and productive, and we are looking forward to another big year.

Please study the enclosed Directory carefully to see some new names and new committees. Use the Directory to contact committee chairs or officers with ideas and comments related to their areas of responsibility, or to volunteer your help.



#### OPERATION BRIGHTSIDE:

PROJECT BLITZ ON APRIL 16;

PROJECT PICKUP EVERY THIRD MONDAY

Operation Brightside's Project Blitz will hit Tyler Park again on April 16 at 9 AM. For two years, Tyler Park has been one of the best represented neighborhoods; please meet at the bridge then and help us clean up.

Meanwhile, Project Pickup is still in operation. The Tyler Park neighborhood is scheduled for regular pickup on the third Monday of each month (with occasional delays). Put up to three items out where your regular trash goes, bundling smaller items.

Thanks to Chris Allen and the other folks who helped him on March 19 in a preliminary cleanup of Tyler Park. Sorry this newsletter got out too late to publicize that event--the editors have been delayed by unusually heavy work commitments and a sometimes taxing pregnancy.

Potential advertisers: putting an ad in this newsletter is only \$30 per issue for a quarter page ad. And you reach about 1400 families within walking distance of your business. Call Kay Orr, 582-7119 (day) or 456-6671 (evenings).

#### FREE ADS FOR TEENS WILLING TO DO YARD WORK IN TYLER PARK AREA

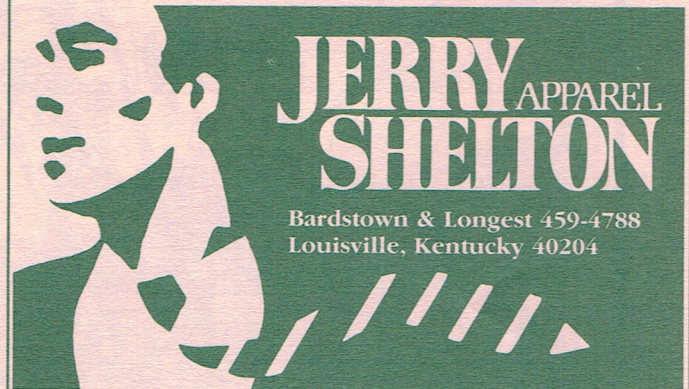
We're going to try this once more, with feeling. As a public service, this newsletter will publish, for free, the names and phone numbers of neighborhood teens (or pre-teens) who want to let others know that they can be hired to do yard work. Any interested worker should send name, phone number, age, and hourly rate to Garrison and Susan Cox, 1717 Edenside Avenue, 40204 (or call, 451-7184) no later than May 20 (next newsletter is due out in early June).

We know there is a demand for your services, kids. We just need to know who is interested in supplying the muscle. Last year, we had only one response to this offer. We are hoping for a better response this year.

## swanson gallery

1506 Bardstown Road  
Louisville  
452-2904

Framing  
Art Jewelry  
Contemporary Crafts



**JERRY APPAREL  
SHELTON**

Bardstown & Longest 459-4788  
Louisville, Kentucky 40204

## BARNETT

FUNERAL HOME

1230 Bardstown Road  
Louisville, Ky. 40204

*Established in 1882*

*A Highlands Neighbor since 1923*

Mary Kay

(502) 459-8685

Cosmetics

*Diane Walker Kessler*

Independent Beauty Consultant

1839 Edgeland Ave.

Louisville, KY 40204



**ROLLER RINK TO REOPEN SOON,  
LATE NIGHT HOURS APPROVED**

Derby City Roller Drome will soon reopen the roller rink on the lower level of Mid-City Mall, which had been closed since Champ's departure. TPNA is cautiously optimistic that Derby City will be a good neighbor, providing a place for families and young people to skate and recreate. No alcohol will be served.

In mid-March, the Board of Zoning Adjustment approved a petition by Derby City to relax the long-standing zoning conditions on access to the lower level of Mid-City Mall. The conditions, imposed when the parking lot was expanded to the north, had required that doors serving the lower level of the mall be locked at midnight. The zoning board ruled that the roller rink can keep its doors open until 6:00 AM, despite protests from Beechwood Avenue residents and a letter of opposition from TPNA.

Relations between Champ's Roller Drome and its neighbors, particularly on Beechwood, were often strained and sometimes antagonistic, with occasional rowdy crowds late at night causing most of the trouble. TPNA is hopeful that Derby City Roller Drome will cultivate better neighborhood relations and not abuse its zoning variance in maintaining late night crowds of patrons.

**BARDSTOWN ROAD TRAFFIC PROBLEMS  
ADDRESSED; CHANGES COMING**

As we go to press, the Board of Aldermen is about to act on a report by traffic consultants Schimpeler-Corradino Associates. The report suggests some important changes along Bardstown Road to reduce congestion and the rate of accidents. Some of the suggestions could change the way traffic moves along the eastern border of Tyler Park Neighborhood, including: (a) a new major entrance to Mid-City Mall, including a light; (b) removing the light at Rosewood Avenue and installing a traffic island to restrict left turns off that street; and (c) prohibiting left turns onto Eastern Parkway by north-bound Bardstown Road traffic from 4-6 PM. Stay tuned for developments.

# DECORATORS

## PAINTING & WALLPAPERING CO.

1609 EASTERN PKWY.-(at Baxter Ave.)

**452-9887**

**SPRING SPECIAL**

### FREE 4 Gallons

of Paint  
With Any Paint Job  
*"Your Choice Of Color"*

Offer Good Thru May 31, 1988  
With This Coupon



**QUALITY  
PAINTING &  
WALLPAPERING  
IS**

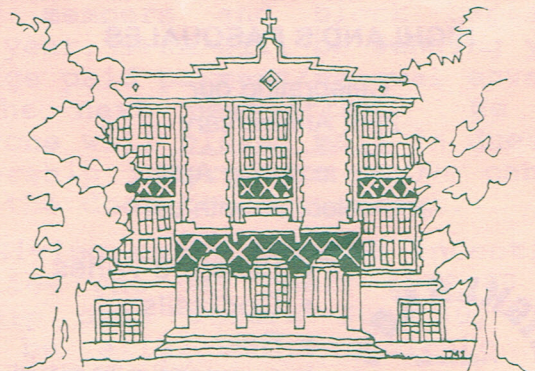
*"Our Guarantee"*  
OVER 27 YEARS OF  
INTERIOR & EXTERIOR  
PAINTING EXPERIENCE

**CALL US  
452-9887**

For Prompt Service



**FREE ESTIMATES    FAIR PRICES**  
**FREE ESTIMATES    FAIR PRICES**  
**FREE ESTIMATES    FAIR PRICES**  
**FREE ESTIMATES    FAIR PRICES**



## ST. JAMES SCHOOL

*"Where Children  
Grow Better"*

Bardstown Road at Edenside

Applications Accepted

Grades: K through 8

4 5 4    0 3 3 0



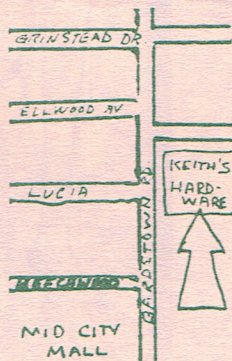


**OPEN 7 DAYS  
A WEEK**

MON Thru SAT. 8am.-6:30pm,  
SUNDAY 10 a.m.-4pm

**1201 Bardstown Rd.**

Phone: 451-3133



**DAVID WALLACE, REALTOR**

*Specializing in:*  
The Highlands  
Germantown  
Audobon Park

Listing homes at a  
commission rate of 5.3%

Call 458-5543  
24 hour message forwarding

**FROM J.D. DENNY, MEMBERSHIP CHAIR:  
TPNA SETS HIGH MEMBERSHIP  
GOALS FOR 1988-89**

TPNA, Inc. is setting a goal for having its highest membership ever. Our goal is to increase membership over 20% from last year --and we will need your help! Membership in TPNA runs from July 1 to June 30 each year. The next membership drive begins in May. Membership objectives include:

(1) **Expanding the Membership Discount Program.** Last year, TPNA initiated a discount program featuring businesses in the Tyler Park neighborhood who made special offers and discounts available to Tyler Park residents who present their TPNA membership cards. Nineteen businesses participated with generous offers, and more are expected to do to this year. (Please patronize these businesses and take advantage of the special offers!)

(2) **Increasing new and renewal memberships by mail.** Past membership drives have relied heavily on time consuming door-to-door solicitation, putting a heavy burden on TPNA's Board members and block captains. This year, TPNA will be sending you a postage paid payment/renewal envelope in the next newsletter. We hope everyone will please mail in dues and membership information so we can cut down the door-to-door effort.

(3) **Giving early payment incentives.** Families who pay their 1988-89 membership dues before June 30, 1988, will be eligible participate in a drawing for a prize to be announced.

(4) **Holding the price of membership to \$5.** While the costs of TPNA activities continue to rise, TPNA is trying to offset increases by boosting the percentage of residents who are members rather than increasing the annual dues per family. So please join early and encourage your neighbors to do so too.

Finally, a little friendly competition: I'm betting that Goddard Avenue (my street) is going to be tops in membership this year (currently 72%, with Hawthorne Hill the street to beat at 95%). The next three highest are Hill Road (70%), Beverly Road (67%), and Royal (63%).



Frances Lee Jasper  
Antique & Contemporary  
Oriental Rugs



1330 Bardstown Road Louisville (502) 459-1044

### HIGHLAND'S PASQUALES

Celebrating our  
25th Anniversary

Come in during April  
and celebrate with us!



- Selected Wines
- Cocktails
- Beer

Enjoy your meal in the relaxed atmosphere of one of our dining rooms, complete with courteous and friendly table service to make your visit a little more enjoyable.

**Italian & American Dining**  
Our Banquet Room Is Available  
For Your Special Occasion

For Information and Reservations Call

**452-9571**

**1314 Bardstown Rd.**

### LOOKING FOR BLOCK CAPTAINS

TPNA is looking for a few good people to serve as block captains. Historically, block captains have provided a vital link between the TPNA Board and the neighborhood, helping with membership drives and passing out flyers. Now, most of the news appears in this Newsletter, and we are trying to encourage neighbors to take care of renewing (or starting) their memberships by mail.

Nonetheless, we sometimes need the help and input of one person (or couple) per block to get information out in a hurry, and there is no simple way other than the block captain system. If you are interested in serving your neighbors in this capacity (or if you think you are supposed to but are not sure), please contact a member of the Block Captain Committee: (a) Mary John Celletti, 1801 Edenside Avenue, 452-1742; (b) Janet Dakan, 7 Hawthorne Hill, 451-5774; or (c) J.D. Denny, 1447 Goddard Avenue, 454-4878.

### MIKE CARRELL DEPARTING LOUISVILLE BOARD OF ALDERMEN

Just last week, long time Alderman Mike Carrell announced that he is resigning from the city's Board of Aldermen to accept a position as head of the business department at a California university. He has served his constituents in Tyler Park and the city tirelessly, including two terms as president of the Board of Aldermen. TPNA has always found Mike receptive to the neighborhood's goals and willing to go to the mat for us on funding issues.

We are saddened by Mike's departure, but wish him every success in California. Stay tuned for news of Mike's replacement.

### NEW, ACCESSIBLE BENCHES IN THE PARK

Next time you are in Tyler Park, watch for two new benches which have been installed. They are accessible to the handicapped -- yet another attempt to make Tyler Park a place where everyone can relax and enjoy the surroundings. Thanks to Metro Parks for helping with the installation.





## HUNGRY PELICAN

10% Senior Citizens Discount

1360 Bardstown Road  
458-3400

*Good Food from the Sea*

## Fashion House

WOMENSWEAR AND ACCESSORIES



### New!

IN THE  
HIGHLANDS  
ALL NEW CLOTHING  
FOR THE LOUISVILLE WOMAN

Monday-Saturday 11 AM 6 PM  
Closed Sunday  
Evenings by appointment - 456-2426  
1310 Bardstown Road  
(Across from Bristol)  
Parking In Rear  
VISA-MASTERCARD-LAYAWAY

Tyler Park Neighborhood Association, Inc.  
P.O. Box 4452  
Louisville, KY 40204

Non-Profit Org.  
U.S. Postage  
PAID  
Louisville, KY  
Permit 1549

CAR RT SORT \*\* CR 432  
Resident  
7 Hawthorne Hill  
Louisville, Ky. 40204