

The Neighborhood Bridge June 2012

T y l e r P a r k N e i g h b o r h o o d A s s o c i a t i o n

Summer 2012 Newsletter

Seventh Annual Tyler Park Neighborhood Association **Garden Tour and English Tea** **‘The Houses of Windsor’** **Saturday, June 16th from 9:30 am to 3:30 pm**

The 2012 Tyler Park Garden Tour is sure to live up to its reputation as one of Louisville's BEST garden tours with ten beautiful and unique gardens available for your viewing pleasure. Find original and innovative ways to plan or improve your own garden!



This year we have as an added event an English tea that will be presented and served by one of the garden tour hosts who just happens to be English! Participants in this added event in honor of the Diamond Jubilee of Queen Elizabeth of England are sure to experience a pleasurable afternoon indeed! There will be three seatings on the day of the tour. This event is first come and first served, as there will be only 25 tickets sold for the English tea.

For the garden tour without the tea, the cost is \$12. Tickets can be purchased in advance or on the day of the tour at ValuMarket in the Mid-City Mall. The price for the English tea is \$10 when you purchase a garden tour ticket for a total of \$22.

Start the garden tour at the Mid-City Mall where you will receive a map to all of the gardens, free bottled water, and register for beautiful door prizes including a fabulous Kate Middleton style fascinator, appropriate for any engagement. Wearing it you will impress all royal guests at any event you attend. The hat is crafted by award

winning hat designer Kathey Schickli, a Tyler Park resident. Her designs can be seen and purchased at the Hyatt Hotel or on her website, www.drinksattheplaza.com.

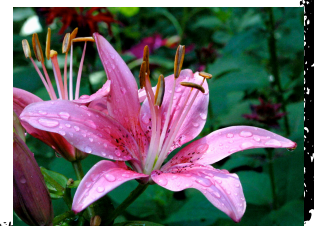
All proceeds from the Tyler Park Garden Tour will be dedicated to the replacement of TPNA neighborhood banners that signify neighborhood boundaries and neighborhood identity. TPNA is currently seeking business and individual sponsors to

contribute to this effort. Contributors will have their business or philanthropy recognized by having their name emblazoned at the bottom of the banner. For more information, please contact Jeanette Westbrook at Westbrookj@aol.com --Jeanette Westbrook



To reserve your ticket and assigned seating time for the English Tea contact Garden Tour Co-Chair Terry Redden at: tredden@semonin.com or 454-5795.--\$10

Buy your Tyler Park Garden Tour tickets in advance or on the day of the tour at the ValuMarket in the Mid-City Mall. --\$12





View from the Bridge

Spring brings our neighborhood into its full glory. Enjoy the season by taking long walks, visiting with friends, and exploring the urban treasure that identifies us – Tyler Park.

Spring also brings your neighborhood association into its most active season. By the time this letter is published, we will have had our annual Easter Egg hunt and both the association and the community at large will have met with Mayor Fischer.

The first meeting with the Mayor was in April, when a committee formed to study and implement a Master Plan for the park conducted him on a tour. They showed the mayor what we have and what it can become, and acquainted him with the funding needs of the plan.

The second meeting was scheduled for May 24, with an address by the mayor in the park. Our printing schedule prevents coverage in this newsletter of the event, but I am confident it will have been as positive and energizing as the tour in April.

The association events will be continuing through the rest of the outdoor season. On the 16th of June, we will have our seventh annual Tyler Park Garden Tour. On Sunday afternoons in September (the 9th, 16th, 23rd, and 30th) we will have our third annual Tyler Park Jazz Festival, in the lower section of the park.

I will close by calling for volunteers. First, make a pledge to yourself to enjoy what we have. Our neighborhood, and especially our park, is a lovely place to live, work, and shop. Second, help the Association if you can. Show support by coming to our events and, if you have the time and energy, join the other volunteers – the TPNA Board and its officers – in the projects we conduct to make the neighborhood even better.

Brian L. Caudill
TPNA President



TPNA at the Grass Roots Gala

The Center for Neighborhoods held their annual “Grass Roots Gala” on Friday, June 1st. The popular event featured activities for the entire family. Music was provided by King Kong, Down by the Wayside Choir, Muddy Walters, John Gage, A Girl Named Earl, Leigh Ann Yost, and Tyler Park’s own Andy Westbrook on the sax. A neighborhood “Street Feast”, a community beer garden, and a “Keep Louisville Weird” raffle added to the festivities. A Down and Dirty Kids area was provided for the youngsters in the crowd and visitors were able to meet the authors of “Two Centuries of Black Louisville”. Many Louisville neighborhoods, including the TPNA, had booths to highlight their accomplishments. The Gala was a great success, and a wonderful opportunity for Tyler Park residents to network with surrounding communities. To learn more about the Center for Neighborhoods visit their web site.

www.centerforneighborhoods.org/
--Rebecca Watson

TPNA Contacts info@tylerpark.org

President - Brian Caudill-439-8030
Vice President - Rebecca Watson - 456-4320
Treasurer - Manny Carralero - 451-5198
Secretary - Janet Dakan - 727-6856
Newsletter Editor - Florence Saltzman
florenceky@gmail.com

TPNA meetings are held the fourth Thursday of each month (except November and December) from 7 to 9 pm at the Highlands/Shelby Park branch of the Louisville Free Public Library inside the Mid City Mall. All neighborhood residents and business neighbors are welcome to attend.

In addition to the officers, Tyler Park Neighborhood Association Board Members are Judy Behanan, Roy Brundige, Joan Dubay, Drew Duncan, Brian Elstner, John French, Julie French, Mike Gramig, Lisa Hite, Denis Hommrich, Kristen Millwood, Corey Nett, Kathey Schickli, Doug Thrasher, Andy Westbrook, Jeanette Westbrook and Rob Williamson.

Easter Bunny Visits Tyler Park



Saturday, April seventh dawned a bright and sunny spring morning. Over seventy children, aged toddler through twelve years, gathered in Tyler Park for the annual TPNA Egg Hunt. At noon, the Easter bunny roared into the park to greet the crowd in a shiny, red fire engine with sirens blaring, driven by the Louisville Fire fighters from the 4th District Headquarters at Rubel and Winter Avenues.

As TPNA president Brian Caudill announced the start of the hunt, the children raced through the park to search for the 700 candy-filled eggs. Two eggs in each age group were designated for special prizes. Finders of the prize eggs included Sam Elsner, Morgan Froehle, Jack Westphal, Beth Moore, Jacob Moody, and Lindsey Smith. Elizabeth Bender won the drawing for the grand prize—a giant, fuzzy rabbit.

A raffle was held for a gorgeous Easter bonnet designed by Kathey Schickli. Winner Johnelle McConnell looked adorable sporting her stylish chapeau. Even the adults had a chance to join in the fun. Two dozen freshly laid eggs, courtesy of Manny Carralero (and his famous Mossrose hens), were donated for a second raffle. Pat Strauss and Florence Saltzman were the happy winners. Proceeds from the raffles, as well as many generous donations by the parents, helped to offset the expenses. Thanks to the firefighters, TPNA Board



members, the Metro Parks Department, and all who participated, for making this year's hunt a truly "eggcellent" event! -- Rebecca Watson





A Neighbor's Column--Volunteer

"If you gotta ask, you'll never know" was supposedly Louis Armstrong's answer to the question, "How do you define jazz?" In Tyler Park, we define jazz by letting you hear from some of the best – see the related story on this year's jazz festivals – and, oddly enough, by working in its neighborhood association (TPNA).

So, maestro, how does working in TPNA define jazz? We have rhythm, we have roots in real people, and we gather the individual talents and personalities in our little band to take flight on the common themes of neighborhood advocacy and community spirit.

The rhythm is year to year and season to season. Many Board members stay active as long as they live in the neighborhood. Others participate while we address a single issue, such as zoning. Some, like me, come in for a while and later return after a period focusing on family or business. These arrivals and departures give us the basic line for our piece of jazz. The seasons give us our choruses, when we all get together – the annual Fall meeting, the Winter wine tasting, the Spring Easter Egg hunt, and the Summer festivals.

We are real people. You are likely to see us walking or jogging through the neighborhood streets, shopping in the neighborhood stores, or escorting our children to and from school. Tyler Park is where we have put down our roots.

Individual talents and personalities? Yes, we do. Our meetings and email threads often tangle. Feelings may get hurt for a short bit, but the long term members can usually smooth the fabric because they have seen *years* of tangles. It is a human organization, moving different views into consensus. In that we are very like jazz – dissonant notes come in to introduce our competing themes, then we all swing together.

(And, finally, because I just cannot resist – like jazz, Tyler Park has a bridge).--Ray Brundige, TPNA Board

From Tom Owen, Metro Councilmember

What makes a neighborhood a place that looks forward rather than a place where decline and abandonment are written all over it? I promise you, across the U.S. there are city neighborhoods like Tyler Park with tree lined streets, a city park on a dramatic piece of real estate, and a tried and true housing stock that are tragic scary places. I believe the magnetism that attracts families financially able to keep up our old houses and ward off decay and decline turns on a "sense of place." We care enough to give time to clean up "our" park and to dream about how to make it even better in the future. Resident Ray Brundige has focused on researching the park's history, even speculating that the iconic stone Tyler Park bridge began with an iron superstructure that was later veneered with giant stones. Our place is a place with a unique and fascinating history.

An infectious love of place inspires "give back" in many other forms: stubbornly picking up litter along our neighborhood by-ways, scraping off debris from the sewer catch-basin cover after a heavy rain, reporting broken infrastructure to Metro Call, and being brave and vigilant enough to call the police when we see an activity in the neighborhood that "just doesn't feel right." We also reinforce bonding with our neighborhood when we show up for our September Sundays jazz concerts in the park, buy tickets for the Wine Tasting, or recruit our friends across town to buy tickets for our June Garden Tour.

Tyler Park is not "Anyplace, USA!" Living in such a beautiful neighborhood is a gift that has to be sustained by our energy and commitment. Everyday we have to quietly and sometimes not so quietly, fight to keep Tyler Park UP. --Tom Owen

Operation Brightside Clean-up in Tyler Park

On Saturday, April 21, a group of us took part in the city-wide Operation Brightside clean-up, focusing our efforts on Tyler Park. We had been rained out the previous weekend, but the weather was marginally better on the 21st. Most of the clean-up was completed by ten participants in Susan Kwasny's InTENSity Fitness boot camp, which is held regularly in Tyler Park. In fact, Susan's group does a clean-up once each month in the park following their regular regimen of exercises. In addition, they help watch out for the park, reporting incidences of vandalism and even suspected drug deals as they happen. They are a real asset to our neighborhood! We all noticed that the park was relatively clean that day, though I did return a grocery cart to Valu Market and carried a section of 2x4 lumber home for future use. --John French



Olmsted Parks Conservancy Efforts in Tyler Park

On Saturday, April 14, a small group of us braved the weather and assisted staff from the Olmsted Parks Conservancy in planting about 50 trees along the hillside opposite the larger playground (parallel to Tyler Park Drive). A thunderstorm made us run for shelter and almost postponed the activity, but the weather moderated and we were wet anyway, so we completed the plantings. Included were cherry, walnut, and redbud trees, which will benefit from the openings left by our removal of bush honeysuckle and other invasive plants from the hillside over the past couple of years. TPNA members helping that day were Joan Dubay, Kathey Schickli, Mike Gramig, and John French. The trees had been provided through a joint effort of the Highlands Arbor Day Committee and Plant for the Planet!, according to Stephen Spanyer, an organizer for the combined effort. A total of 1509 trees were planted in the metro area. About 270 of those were planted in Olmsted Parks, with 150 going to Tyler Park. Our next scheduled date for an Olmsted-coordinated activity in the park is September 8, from 9 to noon. Consult your newsletters or our web sites for further information.--John French

Sunday Afternoons in September

Jazz

in Tyler Park

Mark your calendar and plan to attend:

7th Annual TPNA Garden Tour
Saturday, June 16th, 9:30-3:30

TPNA Meeting, 4th Thursdays, 7-9 pm
at the library in the Mid City Mall
June 28th, July 26th, August 23rd

Jazz in Tyler Park on Sunday afternoons
September 9th, 16th, 23rd & 30th

Keep up-to-date with your neighborhood!
Check out www.tylerpark.org regularly!



**BC
plumbing
company**

Ask The Master Plumber---(502) 634-9725



Highlands Office
2501 Bardstown Road
Louisville, KY 40205
502-454-7900
(Fax) 502-456-5234
**EASY DEPOSIT ATM
AVAILABLE**

InTENSity *Fitness*

Helping You Achieve Your Own Personal 10!

www.InTensityFitness.com
(502) 314-0245

TPNA Membership Update

THANKS to all who joined and renewed. We are now up to 263 dues-paying members.

There were three new business members: Philip W. Barber, DMD, Kizito Inc, Sandy Metts/Mid City Mall. These join The Back Door, Barret Liquor, St. James Catholic Church, Highland Morning, Arts & Craft Dental, Urban Ventures LLC, Edenside Gallery, Boombozz Pizza & Taphouse, Fairleigh Pet Center and the Louisville Federation of Musicians as our business members.

The new members were: Matthew & Jaclyn Bartol, Michael & Nancy Breitenstein, Robert C. Hunt & Marlene Pennington, David & Katie Krebs, Mary Julia & Forrest Kuhn, Julie Purcell, Alice Vardimen, C. Clayton Williams.

The renewing members were: Patti Bell & Jeane Hanley, Nancy Seymour Billington, Jimmy Brown & Nancy Jane Aboud, Brian Caudill, Anita Chambers, Gary & Trudy Fischer, Marcelle Gianelliani & C. J. Pressma, Theresa & David Hinton, Karen Ryan Harris, Kef & Molly Hollenbach, Trudi Kubik, Forrest & Patricia Land, the Long Family, Kimberly S. Naber, Will Nefzer, Eileen O'rdoer & Michael Sary, Megan Robison, Laurel Sedgwich, Hiro & Venus Tanamachi, Jessica & Mac Thompson, Rose Mary Toebbe, Nancy Trabue, the Wilkersons, James & Rebecca Watson.

PLEASE HELP US GET NEW MEMBERS!!! If you have not joined, do so. It will help pay for the cost of the newsletter. Talk to the business owner/manager along Bardstown

Road that you know or your neighbor about joining TPNA.--Janet Dakan



Keith's Hardware and Rental
1201 Bardstown Road
Open 7 days a week:
8:00 am to 6:30 pm, Mon. thru Sat.
10:00 am to 5:00 pm on Sunday.

The TPNA Business Outreach Committee Announces THE BEST OF TYLER PARK

The TPNA Business Outreach Committee is in the process of formulating an event that puts the spotlight on businesses that reside in the Tyler Park Neighborhood. Businesses that reside in the TPNA boundary areas – roughly between Grinstead Drive to Eastern Parkway/ Baxter are encouraged to participate. The public is encouraged to participate by naming their favorite businesses and writing to TPNA on why they are nominating their favorite Tyler Park Business. Look for further information to be forthcoming! If you have ideas for this project to support our TPNA business community, your ideas are welcome!!! Please contact Jeanette Westbrook at: Westbrookj@aol.com or Kathy Schickli at: katheys@schicklidesign.com



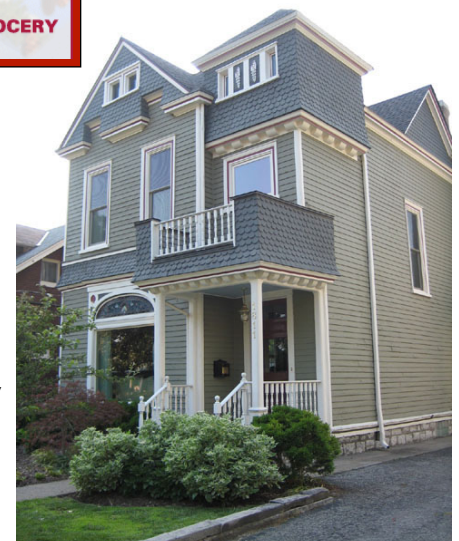
FOR SALE
1811 EDENSIDE
\$465,000
TERRY REDDEN
802-6477

Terry Hall Redden,
Realtor/Broker
tredden@semonin.com

Semonin Realtors
4967 US Hwy. 42
Suite 200
Louisville KY 40222

Voicemail (502) 736-5742
Cell (502) 802-6477
Residence (502) 454-5795
Fax (502) 471-5487

**SELLING HOMES IN KENTUCKY WITH A NETWORK
AROUND THE WORLD**



Children's Programs

June July August

Interactive Storytelling with Marsha Roth

Ages 4-8

Wednesday, June 8, 2 p.m.

Raptor Rehabilitation

Become familiar with some birds of prey from our area.

Ages 5 and up

Wednesday, June 13, 2 p.m.

Mad Science

"Seeking Our Senses" with hands-on activities

Ages 5-12

Wednesday, June 20, 2 p.m.

Speed Art Museum

Hands-on sculpting inspired by the artists Noguchi and Butterfield.

Call 574-1672 to register

Ages 6-12

Tuesday, June 26, 2 p.m.

Stone Carving with Al and Penny Nelson

Call 574-1672 to register

All ages

Wednesday, June 27, 2 p.m.

Campfire Stories with Snack

Ages 4-9

Wednesday, July 11, 2 p.m.

Louisville Water Company

Ages 4-8

Wednesday, July 18, 2 p.m.

Beach Party

Ages 4-9

Wednesday, July 25, 2 p.m.

Summer Reading Finale

Featuring Steve O with his All Star Reader's Magic Show

All ages

Saturday, August 11, 2 p.m.

Teen Programs

June July August

Summer Book Club: Best Books

What was the best school assigned book you read this year?

Ages 12-19

Wednesday, June 6, 3 p.m.

Triple Threat Trivia: Fact or Fiction

Ages 12-19

Wednesday, June 13, 5 p.m.

Art Journal Workshop

Ages 12-19

Monday, June 18, 5 p.m. AND Saturday, June 23, 2 p.m.

DIY PhotoBooth

Bring your best smile and have some fun taking silly pictures with paper props.

Ages 12-19

Wednesday, June 20, All day

Triple Threat Trivia: Hero or Villain

Ages 12-19

Wednesday, July 11, 5 p.m.

4H: Electricity

Ages 12-19

Wednesday, July 18, 3 p.m.

Summer Book Club

Reading and discussing the new Newbery winner Dead End in Norvelt. Ages 12-19

Tuesday, July 24, 3 p.m.

Team Android/Team Apple: Which OS is the best?

Join in this open format discussion and learn more about what makes your Apple or Android device tick.

Ages 12-19

Wednesday, August 1, 2 p.m.

Triple Threat Trivia: ZOMBIES

Ages 12-19

Wednesday, August 8, 5 p.m.

Transitions: Strategies To Move From High School to College.

Making the move from high school to college can be challenging.

Drop by to join us for this open format discussion on facing those challenges.

Ages 18-21

Wednesday, August 15, 5 p.m.

Favorite Summer Reading

What was the best book you read this summer? Ages 12-19

Thursday, August 22, 5 p.m.

Adult Programs

Farm to Table

Join Sarah Fritschner, coordinator of Louisville's Farm to Table initiative, to learn more about growing, buying, and eating locally.

Wednesday, July 11, 7:00 p.m.

Kentucky Author Forum Recorded Presentation

Michio Kaku, author of Physics of the Future, interviewed by James Canton

Monday, July 16, 7:00 p.m.

Back to School with the What, Why, and How of KCAS

Learn more about what the Kentucky Core Academic Standards (KCAS) are, how the standards are determined, why they are important, and much more with Sharon Whitworth, director of KCAS education for the 15th District PTA.

Wednesday, August 1, 7:00 p.m.

Friends of the Highlands-Shelby Park Library Meeting

If you are interested in learning more about promoting the welfare and growth of our library and enriching its resources, please join us the second Monday of each month at 7:00 p.m.

For more information call 574-1672.

Monday, July 9, 7:00 p.m.

Monday, August 13, 7:00 p.m.

Friends of the Highlands-Shelby Park Book Discussion Group

Join us on the second Monday of each month at 6:00 p.m. for a book discussion.

Please call 574-1672 for title or for more information.

Monday, July 9, 6:00 p.m.

Monday, August 13, 6:00 p.m.

Computer Classes

Computer and Internet Basics

Tuesday, July 3, 9:00 a.m.

Tuesday, July 17, 9:00 a.m.

Tuesday, August 7, 9:00 a.m.

Tuesday, August 21, 9:00 a.m.

Severe Weather and Your Safety

Tuesday, July 10, 9:00 a.m.

Tuesday, August 14, 9:00 a.m.

Locating and Evaluating Health Information

Tuesday, July 24, 9:00 a.m.

Tuesday, August 28, 11 a.m.



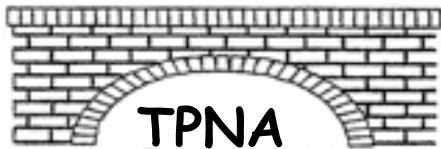
Your Neighbor on Goddard...

SCOTT BELDON
REALTOR®

BRINGING HOME SUCCESS!

Cell: 502-762-6036
www.scottbeldon.com

Wakefield, Reutlinger AND COMPANY REALTORS
4511 Glenridge Park Place, Louisville, KY 40222



Join Your Neighborhood Association

Memberships

Individual and Family dues (2012) \$12 _____
Business dues (2012) \$25 _____
Endowment Fund (2012) _____
Total _____

Make your check payable to TPNA, Inc.

Mail check and form to:

TPNA, PO Box 4452, Louisville KY 40204

Name: _____
Address: _____
Apt. #: _____ Zip: _____
Home Phone: _____
Business Phone: _____
E-mail: _____

I/we would like to work on the following:

Annual Meeting _____
Park Master Plan _____
Wine-Tasting Event _____
Garden Tour and Pottery Sale _____
Membership _____
Zoning and Enforcement _____
Park Cleanup _____
Board of Directors _____
Newsletter Ad Manager _____
Tyler Park Green Initiative _____

READ YOUR MAILING LABEL!!!!

YOU ARE NOT A MEMBER: 1) If your name is not on the label; 2) If only your last name appears on the label and the membership date that appears next to your name is 00-00. TPNA needs your financial support so please join. Submit this form and your check to the above address.

YOU ARE A MEMBER: 1) If your first & last name is on the label with a month and year next to your name. Note: The date that appears next to your name is now the month and year that your membership is due. To keep current, submit this form and your check during the month your membership payment is due. If your renewal is not posted or your information is wrong, please write the correct information on this form & mail the form back to the address listed above so that I can correct your information for the next newsletter. Thanks for your help. Janet Dakan, Membership Committee Chair (727-6856)

Please support all of TPNA's advertisers

NONPROFIT ORG
U.S. POSTAGE
PAID
LOUISVILLE, KY
PERMIT NO. 1549

Tyler Park
Neighborhood
Association
PO Box 4452
Louisville KY 40204