



T y l e r P a r k N e i g h b o r h o o d A s s o c i a t i o n

Fall 2013 Newsletter

Fourth Annual Tyler Park Jazz Festival “Sundays in September”

Sunday Evenings from 4 to 6 pm
September 8th, 15th, 22nd and 29th



The Tyler Park Neighborhood Association proudly presents its fourth annual Tyler Park Jazz Festival - “Sundays in September”. The festival will be held in Tyler Park on four consecutive Sundays from 4pm to 6pm:

- September 8 “Ladies for Liberty”
- September 15 “Appalatin”
- September 22 “West Market Street Stompers”
- September 29 “University of Louisville Jazz Ensemble, directed by John La Barbera”

Many thanks to our wonderful sponsors:
 Louisville Metro Council: Tom Owen
 BC Plumbing
 Cornerstone Realty Group
 The Back Door
 Jamey Aebersold
 Farleigh Animal Hospital
 Jack Frys
 Comfy Cow
 Skyline Chillli



We will have a special raffle each concert thanks to Dittos, Kizito Cookies, Comedy Caravan and others. Comfy Cow will be selling its fantastic ice cream products and Skyline Chili its wonderful chili dogs for all four concerts!



This will be a pet free event and please, no outside alcohol. Bring your own lawn chairs.

We hope you come and enjoy this very special free annual event for the Tyler Park Neighborhood and for all jazz enthusiasts. Hope to see you there.--Brian Caudill

Save the Date!

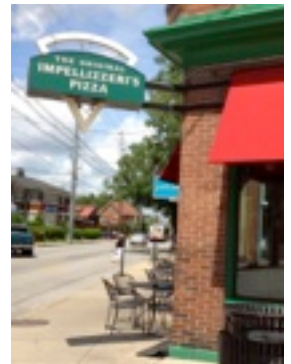
TPNA Annual Open Meeting Thursday, October 24, 7-9 pm

Highlands-Shelby Park Library in the Mid City Mall

Hear project manager Jeff O’Brien and/or Ken Baker with Metro Economic Growth and Innovation speak about “Vision Louisville”—a community process to guide the future of Louisville over the next 25 years. What is your vision for our community? Learn how your ideas can help. Refreshments will be served. Election of the members of the 2014 TPNA Board of Directors will follow the discussion. If you would like to be considered for Board membership by the nominating committee, please contact Rebecca Watson by e-mail (rebecca.watson@twc.com) or by phone (456-4320) by 10/01/13. -- Rebecca Watson

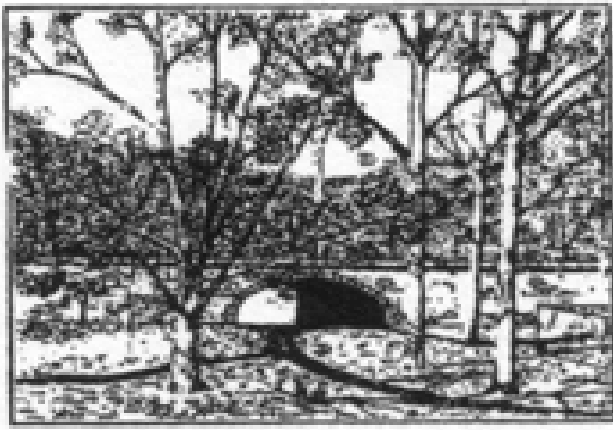
Tyler Park Night at Impellizeri Pizza

Monday, October 21st from 4-11pm will be Tyler Park night at Impellizeri Pizza located at 1381 Bardstown Rd. 10% of the proceeds (both dine-in and carry-out) will be donated to the Tyler Park Fund, so stop by, enjoy an evening of fun and fellowship with your neighbors, and help raise money for our beautiful park! -- Rebecca Watson



Save the Date for the
**Tyler Park Neighborhood Association's
 Annual Yard Sale/Art Sale
 Saturday, October 5th!**

It will coincide with the Week in the Highlands! More info. to come!!!



View from the Bridge

As usual, your Tyler Park Neighborhood Association has been quite busy the last few months!

The TPNA hosted its eighth annual Tyler Park Garden Tour in June. Many thanks go out to Jeanette Westbrook and Terry Redden for heading up the committee. We appreciate all the residents that opened up their gardens for the tour and the many volunteers that helped. This is one beautiful neighborhood!

Later this summer and fall you may start to notice our new neighborhood banners that will be placed out on our major streets. We are quite excited about this and we hope you will be also.

Our fourth annual Tyler Park Jazz Festival will be held on four consecutive Sunday afternoons in September. These free neighborhood events will be from 4 – 6pm on September 8, 15, 22 and 29. Our major sponsors this year are Metro Council – Tom Owen, BC Plumbing, Cornerstone Realty Group and The Back Door. Comfy Cow again will be offering ice cream along with Skyline Chili selling chili dogs and soft drinks. We hope to see another large crowd for each concert.

Our 501(c)3 charitable fund, The Tyler Park Fund, is teaming up with The Olmsted Conservancy to offer bench memorials in Tyler Park. This is a great opportunity to make a donation in memoriam or in honor of a loved one. We have all new benches in our park now but more are needed. Your help would be greatly appreciated. Refer to the article in this newsletter. You can anticipate other opportunities to participate with The Fund to be communicated in the future.

Our TPNA board is constantly looking for more volunteers and more board members. If you want to get involved and volunteer, please contact me at brian.caudill@att.net, or contact any of our other board members. Serving on the board can be hard work, but it is rewarding. Hope to see you soon!

Brian Caudill, TPNA President

Walking In Our Neighborhood

If you've seen neighbors this summer walking down our neighborhood's sidewalks, clipboards in hand, pacing out the width of sidewalks, counting light poles and — strangest and bravest of all — attempting to actually use pedestrian crosswalks... these people aren't eccentric hobbyists, they're volunteers trying to determine just how walkable Tyler Park is.

With assistance from the Center for Neighborhoods and the Louisville Metro Health Department, Tyler Park's "walkability wizards" finished the field work for the Tyler Park walkability study this summer — assessments of major routes through the neighborhood, noting the walking conditions and setting wishes and priorities for them. This fall it will result in a report that the neighborhood will be able to use for planning and priority purposes.

If you have any questions or concerns, please contact walkability chairman Chip Nold, 458-1172 or ijnr@insightbb.com -- *Chip Nold*

Adopt a Bench in Tyler Park

The Tyler Park Fund, the Tyler Park Neighborhood Association's 501(c)3 charitable fund, and the Olmsted Parks Conservancy are teaming up to offer bench tributes in Tyler Park. You can dedicate a new bench or adopt an existing bench in Tyler Park. All benches have a brass plaque that can be personalized with the message of your choice.



\$1,000 – Adoption of a previously installed bench with plaque
\$3,500 – New bench and plaque
Includes:
• Bench, shipping, handling, assembly and installation
• Engraving on a 10" x 2" bronze plaque

A bench dedication is a tax-deductible donation to help support efforts in Tyler Park. To dedicate a bench in Tyler Park contact Liz DeHart at Olmsted Parks Conservancy 456-8125 or liz.dehart@olmstedparks.org.
-- *Brian Caudill*

CHARLIE WILLIAMS DESIGN, INC.



DESIGN / DRAFTING / LANDMARKS / VARIANCES

1626 WINDSOR PLACE LOUISVILLE, KY 40204

502 459 1810

www.charliewilliamsdesign.com

charlie@charliewilliamsdesign.com

TPNA Contacts

info@tylerpark.org

President - Brian Caudill-439-8030

Vice President - Rebecca Watson - 456-4320

Treasurer - Manny Carralero - 451-5198

Secretary - Janet Dakan - 727-6856

Newsletter Editor - Florence Saltzman

florenceky@gmail.com

TPNA meetings are held the fourth Thursday of each month (except November and December) from 7 to 9 pm at the Highlands/Shelby Park branch of the Louisville Free Public Library inside the Mid City Mall. All neighborhood residents and business neighbors are welcome to attend.

In addition to the officers, Tyler Park Neighborhood Association Board Members are Judy Behanan, Ray Brundige, Joan Dubay, Drew Duncan, Brian Elstner, Stan Esterle, Mike Gramig, Lisa Hite, Denis Homrigh, Kelly McKnight, Kristen Millwood, Corey Nett, Chip Nold, Kathey Schickli, Doug Thrasher, Andy Westbrook, and Jeanette Westbrook.

Tyler Park News

The TPNA Board and the Park Planning Committee has been very busy over the summer dealing with a number of issues involving general maintenance of the park, safety, and completion of elements of park master plan projects.

During July we had five instances of unauthorized vehicles driving into and parking in the park. Three were in the upper park and two were in the lower park. Since the installation of the new walkway on the east side of the park, we have needed to install several bollards (posts) to block the new path to vehicles. It became clear over the winter that these would be necessary as soon as possible when a vehicle drove into the park at Tyler Parkway and damaged the new grading and seeding for the walkway project. We had barricades put up temporarily but not only were these moved, the removable bollard at the west end of the park was stolen after it was not re-locked after maintenance this spring. The stolen bollard has been replaced by Metro Parks and the new ones have been ordered.

Graffiti and homeless people continue to be a problem. The vigilance of all of the neighbors is necessary to correct these problems. These need to be reported when observed to police dispatch and City Call (311.)

Larger maintenance issues we are addressing include clearing vines and trees from bridge mortar, and repaving the walkway that runs parallel with Edenside and extending it a few feet to Baxter to complete it. The elimination of pooling water in front of the restroom/stage area and correction of accumulating mud at the bottom of stairs under the bridge is also needed. The asphalt is beginning to crumble there due to freeze/thaw cycles. The slope needs to be adjusted so that it drains properly. In addition, there is a crack in the stairs near the railing that is increasing in width.

We are looking into repairing the sinkholes that are developing above the stairs under the bridge close to the tot lot. They appear to be leaks in the storm sewer lines running through the park and under the bridge. These are becoming a safety problem. And we continue to be concerned about the increasing leaks through the roof of bridge arch.

Councilman Owen has agreed to fund necessary curbing, seeding, and topsoil for the walkway project and repair of damage. We are awaiting a quote for walkway plantings (6 canopy trees) furniture (2 benches and 2 trash cans) and three retaining walls (one by the existing oak tree and 2 where the benches will be installed on the hill above walkway) to complete the walkway project. It is our intention to get the trees funded for fall planting.

We have been successful in getting new signage and several of the crosswalks repainted around the park and on Baxter and are looking into other street crossing safety improvements. -- *Mike Gramig*

Heart and Honey –What I Gain from My Urban Beehive



Much has been made in the media about the declining health of bee populations worldwide. It seems a mysterious hand reaches into the hives, seemingly randomly, and steals otherwise healthy bees. It would make for an interesting episode of a crime drama: no bodies, no murder weapons, no ransom note. When they disappear, they leave their babies, their food, their homes. They're just GONE.

I have been an urban beekeeper for over a year now. My family has been beekeepers (and sometimes just bee-have-ers) for generations. My great-grandfather used to smoke his many hives, not with the standard equipment, but with his cigar. With one false start—a dead or dying queen—I was delighted when my colony made it through the winter. Early March gave us some warmer days, and the girls were out flying for the first taste of spring nectar.

Then, the cold snap hit. They were gone. This time, they had not simply absconded; they were actually dead in the hive. They'd starved with plenty of honey in the hive. The warmer weather urged them to leave their tight ball of warmth. But, when the cold hit again, they couldn't reassemble themselves before it was too late. They were separated from the food, and there was nothing I could have done. Still, I felt like I'd failed them.

So often my fellow "beeks" experience losses. With a shrug, they tell me it is the nature of modern beekeeping. But each loss is disappointing. We hobbyists, environmentalists, and lovers of nature vow to do right by the next colony.

Regrettably, it is also the nature of modern beekeeping that colonies' genetic lines have been weakened by monoculture of crops, pesticide use, improper queen rearing, and use of chemicals inside the hive. Monoculture occurs when fields are planted with only one type of crop—soybeans or corn, for instance—and bees have little variety from which to forage. (Like humans, bees are attracted to colorful and diverse sustenance.) Pesticides are the bane of a beekeeper's craft. They're overused by gardeners and even fogged into our yards by the Louisville Metro government in the name of 'health and wellness.' And some beekeepers treat their bees with fungicides, antibiotics, and other chemicals prophylactically to ward off perceived threats. Humans exposed to so many chemicals and environmental stress would no doubt decline in number. It is no different for our bees.

With two new colonies, I began this season hopeful but with attenuated optimism. What a delightful surprise that my "girls" are blossoming! Each hive starts with about ten thousand bees. I estimate I have at least fifty thousand in each of the two colonies now. And, it was with great pride I took a bit of honey to enjoy and share with my supportive neighbors. The rest of the honey I glean will be reinvested—I'll feed the bees during the winter with their own summer surplus. A healthy, mature hive can produce sixty to eighty pounds of honey every season; my hives are in their infancy. They'll need support to make it through the winter with a relative skeleton crew of workers and their mother queen.

Indeed, I don't keep bees for the honey. I do it because it brings me closer to my father, a fellow bee-lover and beekeeper. I do it because I am fascinated by their order, their abundance, and their ability to positively influence their environment. They maintain a near-sterile space inside their home. Most beguiling to me, bees live their life cycles without harming another organism. Animals and (some) humans eat other animals. Even plants deplete their soil of nutrients. But, the gentle bee harms no plant by taking pollen from here to there. She adds a positive impact to the world through pollination. She makes the honey and beeswax we enjoy--without thought--daily.

Scientists are clamoring to learn how and why bees disappear. All the while, we natural beekeepers tend our hives. We do it with love, and without chemicals. We hope our kind-hearted efforts will strengthen the genetic lines and save our most important pollinators from collapse. We respect and revere the importance of bees. Indeed, the beehive is a model for how I strive to live--without negative impact, an appreciation for beauty, and by sharing a common goal with those I choose for my own colony.

-- *Amber Cann*

TERRY HALL REDDEN
Realtor / Broker

Semonin
REALTORS

Residence: 502-454-5795
Voice Mail: 502-736-5742
Fax: 502-471-5487
Email: trdden@semonin.com
TerryRedden.semonin.com

Our Funky Edged Bardstown Road

Our Baxter/Bardstown business corridor is either literally or figuratively at the end of our street. Most of us, on balance, like what's up there on the business strip but most days we keep all that bustle at arms-length.

I was prompted to think about "our" Baxter/Bardstown strip after two persons recently contacted me to complain. A resident walking to our Saturday morning Farmer's Market was unhappy about all the litter he saw along the way and then yesterday I was copied on an email to our neighborhood business association from an out-of-state visitor. While she praised the shopkeepers and wait staffs, her trip to our business corridor ended up being a "disappointment" because of the "worn and uninteresting storefronts," litter, and drab sidewalks.

Baxter-Bardstown Road can make a lot of positive claims but being "tourist village/flower basket quaint" is not one of them. Our lively 2.5 mile corridor retains an urban, somewhat funky edge where cars, buses, bikes, and many many different types of people normally mingle in amazing safety. Someday walk the strip and smile as you make a list of all the different kinds of businesses, offices, and shops that dwell there.

While I acknowledge there's always room for improvement, I'm pleased that our neighborhood business corridor is the only one in Metro that requires that all new buildings and major renovations look as much like the 1920s as possible. In addition, through the business association and using Council discretionary funds, we maintain a model graffiti removal and weed-spraying program. Furthermore, eight years ago, Metro spent over a million dollars replacing curbs, installing decorative pavers at intersections, and new tree wells from Grinstead Drive to Speed Avenue. Finally, there must be some kind of magic on our corridor to attract all those annual parades and festivals--including this fall another street-closing, car-free Cyclovia!

What can we do about litter? Well, we've added trash cans but frankly there's a limit to how many Metro Solid Waste is willing to empty on their twice-weekly runs. Then, there's the two volunteer Operation Brightside clean-ups promoted by the Highland Commerce Guild--before Derby and before the December holidays--when WE NEED YOU. (Normally, Bearnos Pizza offers free pizza as a lure to volunteers.) Interestingly, the local citizen who complained about litter on Baxter-Bardstown accurately noted that its appearance affects the property-values deep within our neighborhoods. Actually, when it's all said and done, OUR business corridor will be even neater when ALL of us pitch-in! After all, Baxter-Bardstown Road at the "end of our street" is OURS! -- *Our Metro Councilman, Tom Owen*

Earn Money for Tyler Park Fund at ValuMarket

ValuMarket will give the Tyler Park Fund 4% of purchases made with a ValuMarket supplied re-loadable gift card used to purchase groceries. Here is how it works:

*Purchase your activated card for \$5.00 from TPNA. jdubay@gmail.com We will also be selling the \$5 cards at the September Jazz Concerts.

*Before you shop, stop at the service desk and add money to your card. Say you add \$95.00, now you have \$100.00 on your card.

*When you pay for your groceries use your "Tyler Park Fund" card.

*Stop at the service desk and add to your card each time you shop.

Thank you for using your ValuMarket Cards. Seventy-five cards are in use. Between October 2012 and June 2013 we have made \$881.67 for the Tyler Park Fund. **If you have a card, remember to keep using it.** In May we made \$88.40. We netted \$114.40 in June.

Thank you ValuMarket and participants. This is such an easy way to contribute to the Tyler Park Master Plan. ---*Joan Dubay*

Business Feature: Edenside Gallery

Edenside Gallery opened in April of 1991 by entrepreneur Nancy Peterson. Nancy taught at dePaul School and Highland Middle for sixteen years. Ready for a career change, she pursued her love of art and people by opening Edenside Gallery in the Tyler Park Neighborhood. Nancy wanted to feature local artists' works. She wanted the location to be in the Highlands.

"I love the energy and the liberal politics," she commented. "Swanson Craille was open at the time and I thought two galleries in the same area would be good. Look at this location, on a corner with all these windows, plenty of light, plenty of parking."

The name Edenside Gallery was suggested by friend Steve Irwin. "We talked about lots of names, but Edenside had a pleasant, earthy connotation--trees, birds, nature." Nancy waved her hand around the shop filled with rare succulents, a forty year old crown of thorns, and a pair of chattering finches.

The Gallery's first show was with artist Penny Sisto. "It was sparse back then," Nancy comments. For ten years the gallery had individual and group shows. Nancy reevaluated and decided to be a "shop" and a gallery. Now you can find several pieces from many local artists. Nancy began to rattle off a short and incomplete history of artists, "Laura Ross, Catherine Bryant, Bob Lockhart, Jeaneen Barnhart, Doug Miller, Pam Stockard, jewelry by Cindy Borders and Rebecca Hook and did you see these wooden bowls by Dennis Hartman?" Her enthusiasm for these local artists' works is contagious.

The ten Best of Louisville Awards seem to reflect the evolving nature of Edenside as the honors are for best Artisan Jewelry, Gallery, and Gift Shop.

Nancy's a member of Highland Commerce Guild and quick to mention fellow businesses along the corridor... Clay & Cotton, Discoveries. "You can find Waldo. This is a shop local program organized by Carmichaels. Kids go to twenty shops, find Waldo, get twenty signatures and then free ice cream from Comfy Cow. Highland Morning has helped us. People who have never been here in twenty-two years come in. Lots of out-of-town people," she muses.

When asked about challenges over the years, Nancy pauses, "internet sales and other shopping sites have affected business. Right now selling antique engagement rings keeps us in business."

When asked what has made Edenside Gallery so successful, Nancy replies, "Probably the variety, the inventory, there is so much here. People tell me I have a good eye, but I have made lots of mistakes. Some things nobody likes but me." Nancy chuckles, "I don't have a business or an art degree. I shouldn't be successful. I enjoy the relationships I've made with the artists, the customers, and my employees over the years. I appreciate being in the Tyler Park Neighborhood. It feels like home."

Hours: Some Sundays, call first. Every Monday-Saturday 10 to 6.

Bridal registry available. Our wish list is wildly popular!

-- *Joan Dubay*

www.tylerpark.org

September 2013

page 4



Stepping Into History

Sometimes in this neighborhood you just stumble over history. For example, try walking up any of the sets of steps on the north end of our park. You will stumble – because the steps do not match the normal human stride. The park's history explains why.

(Maybe).

The steps date to the early days of the park, when Mr. Ford's Model T automobile was just starting to roll off the production line.¹ So, the story goes, they were built for horses. Better yet, they were built for a very specific horse, whose statue is about a tenth of a mile east and north of the park. The story, in its full cry, is that the steps were built so that Carolina could carry General John Breckinridge Castleman to inspect the Louisville parks.

We can easily walk some of that back. General Castleman, as is well known, was a local businessman who spent considerable time and money for civic works and especially for the Louisville parks system. He had an estate, called Castlewood, in the city's eastern suburbs, and was one of the driving forces in the development of the east end. He was famed for his horsemanship and for establishing and publicizing the American saddlebred. Carolina was one of his favorite mares, jet black with a white star on her forehead. It is a reasonable assumption that she and her rider would have passed through our park at least once while going from their home to points north and east.

We even have an eyewitness account for part of the story. In a memorial tribute, Ernest Kettig, a parks superintendent for 25 years, remarked "It was Gen. Castleman's habit to arise every morning at 4 o'clock and mount his famous saddle horse, Carolina, for a tour of inspection."²

That said, the timing could be a stumbling block. Our story hangs on the idea that the General was starting from his home on Hill Road, riding Carolina. So we need evidence that the home, the General, and the horse were contemporary to the steps.

Newspaper stories establish Castlewood as his home from 1905 until his death in 1918. Carolina was with him at least until 1913 when they both attended the ceremonies dedicating their statue at the head of the Cherokee Triangle.³

We can not be sure, however, when the steps were put in place. Existing records are unclear and the earliest known photograph of the area near the steps, taken in 1913, is inconclusive. It shows the walkway to the east of the bridge but not the steps themselves, which are hidden by the slope of the hill.

Various plans exist that guided development of the park. The Filson Historical Society has a lovely hand-colored plan from the Olmsted Associates, dated March 9, 1907 (five weeks after Tyler Park was named). The plan has walkways and steps on both sides of the bridge, but not the steps that rise to Windsor Place. A schematic from 1910 shows the lots on Windsor Place and the northeast corner of the park, with the steps in place.

That is not conclusive. None of the plans show the steps as they are today, where each set is a single flight that uses bare ground for horizontal spacing and blocks of limestone as risers. The drawings use groups of steps, with spacing between the flights.

It does indicate the steps were being built as the park came into being. Most of the land was owned by the Parks Commissioners by 1907, and the final piece by 1911. The parcel at the northeast corner, which holds one set of steps rising to the bridge and the set of steps to Windsor Place, was added to the park in 1910. In the meantime, a major sewer line was being cut through the site, Tyler Park Drive was being built, and the various amenities and plantings were going into place. The General and Carolina had a lot to inspect.

Now we come to the last stumbling blocks. After extensive research, no written evidence suggests that the steps were built to make it easier for the General and Carolina to climb the northern slopes. Also, while the steps seem to be placed for an equine stride, riders we have contacted have suggested the grade is still very daunting.

My own theory is that the General probably directed the placement of the steps, just because he took such care with every aspect of all of the parks and parkways. The limestone risers probably came off the road bed being

cut for Tyler Park Drive and I can envision him saying, "There. And there. And there." Then I can see the old cavalryman showing Carolina the challenge, and their riding gloriously up the slope.

Build history from the stones, but remember to cherish the stories.

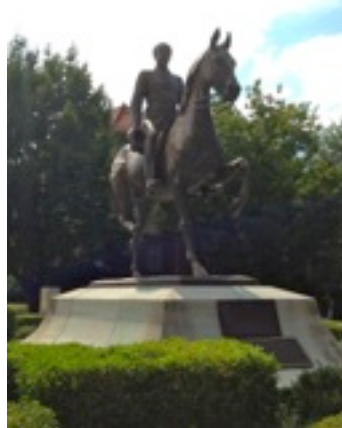
-- © 2013 Ray Brundige

¹ Model T production started on Oct. 1, 1908.

² "Was Father of Park System", Louisville *Courier-Journal*, May 24, 1918, page 2.

³ She retired to pasturage some time after that; planning for the General's funeral included a discussion on bringing her to Louisville from Madison County.

Castleman Statue Approaches 100



November 8, 2013 will mark the one hundredth anniversary of the Castleman statue. In anticipation of this upcoming centenary, the Cherokee Triangle Association has formed a committee to coordinate conservation work and other activities surrounding the Castleman Statue Centennial. To commemorate this important event, the Cherokee Triangle Association in conjunction with the Kentucky Watercolor Society held an art contest to select a piece of art to honor the Castleman Centenary. The winning entry will be debuted at a reception with the winning artist and the statue conservator on August 22nd from

2:00-7:00 p.m. Limited-edition, signed and numbered centennial prints and selections of the original art from the competition will be available for purchase at the reception with a portion of the proceeds to benefit the Castleman Restoration Fund. Those interested in attending the reception should RSVP at gmorris1314@gmail.com. Restoration work on the statue will commence in October and culminate with a centennial celebration on November 9th. Details will be released at a future date. -- *Tim Holz*

Atherton High School 2013 Hall of Fame

Atherton High School will honor former students, a principal and a teacher at their 12th Annual Hall of Fame Banquet on Thursday, September 19, 2013 at 6PM. The banquet location is Galt House Hotel and Suites, Grand Ballroom A in Louisville, Kentucky.

President of the Atherton Alumni Association, Nicholas G. Gardner, said: "Atherton has a long history in this community and honoring these distinguished alumni and teachers not only recognizes the contributions of Atherton, but also inspires future generations". Since 2002, Atherton has inducted into their Hall of Fame 138 teachers, principals, coaches and former students including such nationally recognized alumni as author Sue Grafton, David Grissom, Metro Council member Tom Owen and Congressman John Yarmuth.

The Atherton Alumni Association officers are President Nick Gardner (class of 1971), Vice-President Kevin Collins (1973) and Secretary Sandy Eggenpiller Callahan (1964). The Atherton High School Alumni Association was started about 12 years ago, to bring together former and current students and faculty. Their website is: www.athertonalumni.com The Hall of Fame Banquet is their signature event. For Banquet tickets, visit www.athertonalumni.com or call Nick Gardner (502) 568.4267.

The 2013 Hall of Fame Class: Lois Bewley, 1952; Wood, Currens, 1960; Janice Fish, Principal; Hal Heiner, 1969; Melvyn Koby, 1956; Bill Lawrence, 1959; Regina Hensley Mills, 1985; Cliff Richardson, Teacher; Clarke Schleicher, 1976; Barbara Weakley-Jones, 1968; Frank Yeager, 1953.

2014 Hall of Fame Nominations are now being accepted at www.athertonalumni.com. For further information, contact Nick (502) 568.4267 or Sandy Callahan (502) www.tylerpark.org 491.8872. -- *Courtland Rose*

September 2013

page 5



Saint James School
SCHEDULE A TOUR TODAY!
Pre-School - 8th Grades
 454-0330 x 11

A Culture of Excellence
Where Each Child Thrives



Zoe, a Tyler Park neighborhood Library Champion.



Highlands-Shelby Park Program Calendar September-October 2013

Children's Programs

- Campfire Stories, Songs and Smores**, Tuesday, September 10, 7:00 PM, Ages 3-8
 - German Folk Tales with craft and snack [International Month program]**, Tuesday, September 17, 7:00 PM, ages 3-8
 - Pirate Pajama Party**, Tuesday, September 24, 7:00 PM, ages 3-8
 - Fall Fun Storytime**, Tuesday, October 8, 7:00 PM, ages 3-8 and Wednesday, October 9, 10:15 AM, ages 2-5
 - Magic Tree House Halloween Party**, Thursday, October 17, 4:15 PM, ages 5-9
- Read the book *Haunted Castle on Hallow's Eve* prior to the program and enjoy activities and a snack.
- Halloween Costume Storytime**, Tuesday, October 29, 7:00 PM, ages 3-8 and Wednesday, October 30, 10:15 AM, ages 2-5
- In addition to our specially listed children's programs the Highlands-Shelby Park Library has year round story times. They are:
- Family Story Time**, every Tuesday at 7:00 PM, for ages 3-8 years old.
 - Toddler/Preschool Story Time**, every Wednesday at 10:15 AM, for ages 2-5 years old.
 - Baby Story Time**, every Thursday at 10:15 AM, for ages under 2 years old.

Teen Outpost Programs

- ACT Strategies for Success**, Saturday, September 7, 10:30 AM
 - Books to Movies**, Thursday, September 19, 4:30 PM
- A look at some of the best and worst book to silver screen adaptations.
- I'm with the Banned**, Monday, September 23, 4:00 PM
- A look at the history of book censorship.
- Halloween Happy Hour**, Friday, October 4, Monday, October 7, and Tuesday, October 8, 3:00 PM
- Drop by to help decorate the Outpost for Halloween.
- Teen Read Week**, October 13-19
 - Haunted Halloween**, Monday, October 28, 4:00 PM
- A look at the history of horror movies, haunted houses and all things dark and scary.
- Annual Teen Halloween Party!** Thursday, October 31, 4:00 PM
- Drop by for some treats at the Outpost.

Adult Programs

- Highlights of Germany** [International Month program], Saturday, September 14, 3:00 PM
- Rob and Andrea Gieszl present experiences in today's Germany.
- Computer Classes: Call 574-1672 to register.**
 - Friends Meetings**, Mondays, September 9 and October 14, 6:30 PM

The champions are back! Check out photos of some of Louisville's Summer Reading Champions at LFPL.org. While there, learn more about the Library's annual Summer Reading Program and help a child in your life become a Library Champion too.



Helping You Achieve Your Own Personal 10!

www.InTensityFitness.com
(502) 314-0245

Mark your calendar and plan to attend:

TPNA Jazz Fest-Sundays in September
 Sundays, September 8, 15, 22 & 29 from 4-6 pm

Annual Yard Sale/Art Sale
 October 5th

Tyler Park Fund Benefit at Impellizeri's Pizza
 Monday, October 24th from 4-11 pm
 1381 Bardstown Road

TPNA Open Meeting and Election
 Thursday, October 24th, 7-9 pm
 at the library in the Mid City Mall

TPNA Meeting, 4th Thursdays, 7-9 pm
 at the library in the Mid City Mall

Tyler Park Clean-Up Volunteers Needed
 Saturday mornings, 10-12
 September 14 and November 2

Keep up-to-date with your neighborhood! Check out
www.tylerpark.org regularly!



Mixed News about Membership!!! New Memberships are Stable But Renewals are Way Down

TPNA business membership grew last quarter by 2 members and individual/family residents grew by 9 members. Our totals are 21 businesses and 273 individual/family members. Unfortunately, our renewals were way down from 60 individual/family members to only 26 this quarter despite repeated reminder mailings. Our committee has not made those time-consuming telephone calls but may have to resume them if people do not respond to the mailings.

Two new businesses joined this quarter: Dragon King's Daughter at 1126 Bardstown Rd and The Jewel Box in the Mid City Mall. Three members renewed: Kizito, Edenside Gallery and Almy Law Office. Sixteen recurring business members are Highland Coffee Company, Keith's Hardware, Heine Brothers' Coffee, Arts & Craft Dental, Fairleigh Pet Center, The Back Door, Gabor S. Vargo, DMD, Philip W. Barber, DMD, Highland Morning, Louisville Federation of Musicians Local No. 11-637, Boombozz Pizza & Tap House, St. James Church, Barret Liquor, Sandy Metts / Mid-City Mall, Louisville Jazz Society and Charles Williams Design.

Nine individual/family residents joined: David & Holly Taylor, Ian & Candice Luijk, Sallie & Clay Stevens, Judith & Brian Gallagher, Areti Baldwin & Masero, Anthony Nold, Cynthia Cooke, Robert & Cindy Adelberg and Paula Head & Deb Wallace.

Twenty-six individual/family members renewed: Nancy Seymour Billington, Aaron A. Conley, Emmett Ratterman Jr., Patricia & Robert King, Joe & Selena Ballantine, Sammie Lambert, Theresa & David Hinton, Bob & Cindy Foshee, Emily Renda & David Buren, John & Carrie Doyle, Kef & Molly Hollenbach, Sarah Jane Schaaf, Stewart Hoertz, Stacey Robinson, Kathleen A. McKiernan, John & Brooke Blackford, Rose Michal, Jennifer Adam & Jason Thompson, Melanie Chilton, Susan & Bob Bibelhauser, Diana & Gunnar Hansen, Phil & Carol Held, Bonnie Lane, Mike Tracy, Cathy Hull and Marcia & Bernis Woodward.

Thanks to Judith & Brian Gallagher, Sammie Lambert, Theresa & David Hinton, Cynthia Cook and Jennifer Adam & Jason Thompson who combined donated an additional \$147 above the cost of the membership dues, covering the cost of postage for this quarter. There were no donations to The Tyler Park Fund this quarter.

-- Janet Dakan




**GREENHAVEN
TREE CARE**

- Certified Arborists
- Consulting
- Plant Health Care
- Emerald Ash Borer Treatments
- Pruning and Tree Removal

244-8770

www.greenhaventreecare.com



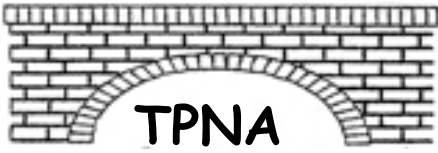
TPNA Garden Tour a Blooming Success

This year's Annual Tyler Park Garden Tour was a huge success! We toured ten beautiful gardens never seen on tour before on Summit, Hill, Royal, and Eastern Parkway. We rented an air-conditioned van from Enterprise, driven by volunteer Andy Westbrook. Attendance was approximately 110 plus 24 volunteers, best ever! We had visitors from 15 Jefferson County zip codes, plus Indiana, Oldham, and Bullitt counties. We are very proud of the positive comments and the opportunity to showcase our neighborhood.

Thanks to our sponsors, Keith's Hardware, Plant Kingdom and Schickli Designs for donating our door prizes, to Semonin Realtors for donating printing and to all our generous sponsors: The Bristol Bar & Grille and ValuMarket, Abundant Tree Care Services, Arts and Crafts Dental, Jeanette Westbrook, "Going Nutts" Hot Roasted Almonds and Pecans, Henry McGalliard Landscape Design + Build, Kizito Cookies, Nearly New Shop, Terry Redden of Semonin Realtors and Yoga on Baxter.

The net profit was approximately \$1,300. We will donate most of that to the purchase of outdoor banners which will identify Tyler Park Neighborhood.

-- Terry Redden, Jeanette Westbrook, Co-Chairs



Join Your Neighborhood Association

Memberships

Individual and Family dues \$12 per year
Business dues \$25 per year

Donate to The Tyler Park Fund

Please write separate checks for donations and dues.

Dues should be written to TPNA, Inc.

Donations to The Tyler Park Fund

Mail check/s and form to:

TPNA, PO Box 4452, Louisville KY 40204

Name: _____
Address: _____
Apt. #: _____ Zip: _____
Home Phone _____
Cell Phone _____
E-mail: _____
Let us know about new or changed emails for our eblast alerts.

READ YOUR MAILING LABEL!!!!

I/we would like to work on the following:

- Park Master Plan _____
- Winter Event TBA _____
- Garden Tour _____
- Membership _____
- Zoning and Enforcement _____
- Park Cleanup _____
- Board of Directors _____
- Newsletter Ad Manager _____
- Tyler Park Green Initiative
Walkability Survey _____
- Tree Conservation _____

YOU ARE NOT A MEMBER: 1) There is no date appearing next to your name; or 2) The membership date that appears next to your name is 00-00. TPNA needs your financial support for our activities including the publication and mailing of the newsletter so please join now. Submit this form and your check to the above address.
YOU ARE A MEMBER: 1) Your first & last name appears on the label followed by a date (month and year). The date is your renewal date or when your membership is due. Since mailing costs have increase, TPNA no longer sends acknowledgement thank you cards for membership dues. If you must have one, please contact Janet Dakan at the number below or write a note to the address above.
If the information on your label is wrong, please print the correct information on this form & mail it back to the address listed above so that I can correct your information for the next newsletter. Thanks for your support and help.

--Janet Dakan, Membership Committee Chair (502) 727-6856

Please support all of TPNA's advertisers

October 5th
Saturday,



Sundays
September 8th, 15th,
22nd, and 29th
from 4-6 pm
in Tyler Park



NONPROFIT ORG
U.S. POSTAGE
PAID
LOUISVILLE, KY
PERMIT NO. 1549

Tyler Park
Neighborhood
Association
PO Box 4452
Louisville KY 40204