



# The Neighborhood Bridge

June  
2013

**T y l e r P a r k N e i g h b o r h o o d A s s o c i a t i o n**

*Summer 2013 Newsletter*

## Eighth Annual Tyler Park Neighborhood Association Garden Tour **The Hidden Gardens of Tyler Park Neighborhood** Saturday, June 15th from 9:30 AM – 3:30PM *Don't miss it! Beautiful never seen Gardens of Tyler Park!*

All tickets for the Garden Tour are available on the day of the tour or in advance at ValuMarket in the Mid-City Mall. Tickets are \$12.00. Transportation to all gardens is provided via a continuously circulating air conditioned van at no cost.

Have you ever wondered as you walked or drove by Tyler Park's beautiful homes just what may lie beyond those beautiful front lawns? Now, you'll be able to do just that by attending the 2013 TPNA Garden Tour. This year, we plan to take you to areas of Tyler Park Neighborhood that have not been showcased before due to being just a little harder to get to on foot but are just as beautiful as the gardens in years past.

The 2013 Tyler Park Garden Tour will feature lovely gardens in the upper Tyler Park Neighborhood areas including: **Valley Road, Summit Avenue, Royal Avenue, Hill Road, and Eastern Parkway areas.** Be sure to wear comfortable, skid resistant footwear as some gardens have terraced or steep inclines.

Start the garden tour at the Mid-City Mall where garden tour participants can purchase tickets, receive a map and descriptions of gardens on the tour, free bottled water, and register for beautiful door prizes. Then, board our air-conditioned van for transportation to nine fabulous gardens featuring perennials, annuals, koi ponds, water features, manicured vistas, tiered gardens, and examples of creative gardening in challenging landscapes. Meet area gardeners, hear about and see creative ideas for your own garden, and take in the beauty of the surrounding neighborhood.

This year's garden tour is sure to add to the reputation of the Tyler Park Neighborhood Garden Tour as one of Louisville's BEST garden tours.



Soothing to the soul, and food for the creative or contemplative mind, see this year's garden tour, rain or shine!

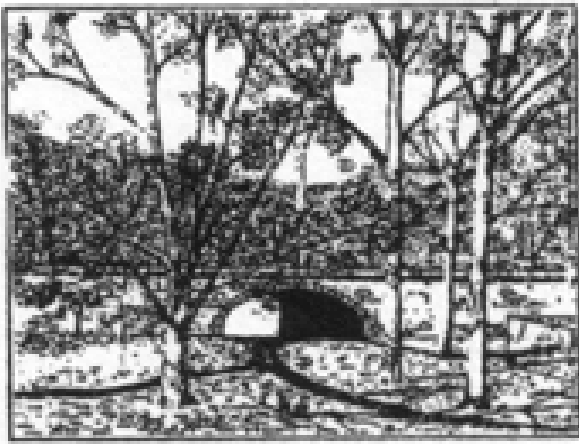
For more information about The TPNA Garden Tour, to volunteer, or to become a sponsor of the tour, contact Garden Tour Co-Chairs Terry Redden at: [tredde@semonin.com](mailto:tredde@semonin.com) 454-5795 or Jeanette Westbrook at: [Westbrookj@aol.com](mailto:Westbrookj@aol.com) 451-8207.

All proceeds from the Tyler Park Garden Tour will be dedicated to the continuing efforts to replace the TPNA Neighborhood Banners that signify our neighborhood boundaries and identity. Look for the first of 30 banners to be installed by Fall 2013.

TPNA continues to seek business and individual sponsors to contribute to banners to be placed along the business corridor. Contributors will have their business or philanthropy recognized by having their name emblazoned at the bottom of the banner. For more information, contact Jeanette Westbrook at: [Westbrookj@aol.com](mailto:Westbrookj@aol.com) 451-8207.--Jeanette Westbrook

**Save the dates . . .**  
**Sundays in September, 4-6 pm**  
**September 8th, 15th, 22nd, and 29th**

**Jazz**  
**in Tyler Park**



## View from the Bridge

Over a year ago Mayor Greg Fischer challenged the citizens of Louisville to ask themselves, “What can I do to help make the city where I live a more compassionate place?” Certainly the candlelight memorial in Tyler Park and the planting of 26 redbud trees in the park was a wonderful response to the Newtown tragedy thanks to Christian and Henry, Tyler Park residents who had a small idea that took root and grew. This season as the weather brightens and more of us are out and about, I challenge you to get to know your neighbors. Try a front porch Tuesday (or any day) and invite the neighbors on either side of you to sit a spell. A small conversation can lead to a wonderful feeling of community. We have three active block watches in Tyler Park ( Beechwood, Edgeland, and Tyler Pkwy). These groups started small and grew. Ask the participants and they will tell you that the quality of their life in the neighborhood has been enhanced. TPNA would be glad to help you get started.

In the meantime join us for our next community event the Garden Tour, June 15. Mark your calendars for our Jazz Series in the park on Sundays in September. Join us at our summer TPNA Board Meetings (June 20, July 25, August 22) at 7pm at the library at Mid City Mall. We need volunteers and ideas to serve the citizens of Tyler Park.

Be a good steward of our neighborhood by picking up trash on your block or in the park. Be proactive and compliment your neighbors. Set a good example by keeping up with your alleyway, trees and lawn. Stop your car at the crosswalks and let the pedestrians pass. Aspire to inspire! If you see something you don't like call 311 or the police and report it. Don't assume that someone else will do it. We the residents have to create the culture we want in Tyler Park.--*Brian Caudill, TPNA President*

## Earn Money for Tyler Park Fund at ValuMarket

ValuMarket will give the Tyler Park Fund 4% of purchases made with a ValuMarket supplied re-loadable gift card used to purchase groceries. Here is how it works:



- \*Purchase your activated card for \$5.00 from TPNA. [jdubay@gmail.com](mailto:jdubay@gmail.com)
- \*Before you shop, stop at the service desk and add money to your card. Say you add \$95.00, now you have \$100.00 on your card.
- \*When you pay for your groceries use your “Tyler Park Fund “ card.
- \*Stop at the service desk and add to your card each time you shop.



Thank you for using your ValuMarket Cards. Seventy one cards are in use. Between October 2012 and April 2013 we have made \$678.67 for the Tyler Park Fund.

If you have a card, remember to keep using it. In March we made \$125.40. We netted \$67.40 in April.

Thank you ValuMarket and participants. This is such an easy way to contribute to the Tyler Park Master Plan. ---*Joan Dubay*

## Walkability Study has Begun

Most of us love walking in a neighborhood where everything from first-run movies to woods crews to a dragon roll can be found within an easy amble.

But how well does our Tyler Park neighborhood really accommodate walkers?

We began the process of answering that question on an overcast but pleasant May 11, when 15 neighbors walked four principal routes of the neighborhood, judging the condition and width — or absence — of sidewalks, the available lighting, sidewalk obstructions, crosswalks and other conditions that effect how easy it is to stroll the Tyler Park neighborhood.

The assessment began in the Discovery Center at Highland Green, 1401 Bardstown Road. Lisa Dettlinger, Associate Director of the Center For Neighborhoods, and Alex Molina, the Walkability Assessment Coordinator and Mayor's Miles Coordinator for the Louisville Metro Department of Public Health and Wellness, gave a brief training on how to judge a streetscape's walkability, and provided an assessment tool for the routes. The TPNA's Walkability Committee has identified six principal routes in the neighborhood. Four were assessed May 11; the two others will be assessed within the month. By late summer or early fall, we should have a report that identifies problems and helps set neighborhood priorities for pedestrians.

If you have any questions or concerns, please contact walkability chairman Chip Nold, 458-1172 or [ijnr@insightbb.com](mailto:ijnr@insightbb.com) --*Chip Nold, TPNA Board*

### CHARLIE WILLIAMS DESIGN, INC.



DESIGN / DRAFTING / LANDMARKS / VARIANCES

1626 WINDSOR PLACE LOUISVILLE, KY 40204

502 459 1810

[www.charliewilliamsdesign.com](http://www.charliewilliamsdesign.com)

[charlie@charliewilliamsdesign.com](mailto:charlie@charliewilliamsdesign.com)

### TPNA Contacts

[info@tylerpark.org](mailto:info@tylerpark.org)

- President - Brian Caudill-439-8030
- Vice President - Rebecca Watson - 456-4320
- Treasurer - Manny Carralero - 451-5198
- Secretary - Janet Dakan - 727-6856
- Newsletter Editor - Florence Saltzman  
[florenceky@gmail.com](mailto:florenceky@gmail.com)

TPNA meetings are held the fourth Thursday of each month (except November and December) from 7 to 9 pm at the Highlands/Shelby Park branch of the Louisville Free Public Library inside the Mid City Mall. All neighborhood residents and business neighbors are welcome to attend.

In addition to the officers, Tyler Park Neighborhood Association Board Members are Judy Behanan, Ray Brundige, Joan Dubay, Drew Duncan, Brian Elstner, Stan Esterle, Mike Gramig, Lisa Hite, Denis Hommrich, Kelly McKnight, Kristen Millwood, Corey Nett, Chip Nold, Kathy Schickli, Doug Thrasher, Andy Westbrook, and Jeanette Westbrook.



## TPNA Marches in St. Pat Parade

Irish eyes were smiling as the Tyler Park Neighborhood Association joined the the Ancient Order of the Hibernians in the annual St. Patrick's Day Parade. Hundreds of spectators lined the parade route enjoying traditional Irish food and libations provided by neighborhood businesses. This year's theme was "40 Shades of Green". Brian Caudill, Mike Gramig, Ray Brundige, Manny Carralero, and Robbie Snawder led the way bearing the Tyler Park banner. Andy Westbrook, driving a decorated vintage VW van, The "Leprechauns of Tyler Park" (Rebecca Watson, Kim Westfall, Chesley Blackford, Jessica Fahey, and Jena Ansert) and Board members Jeanette Westbrook and Kristen Millwood, along with Ellie and Garreth, followed. 2013 marked the eleventh appearance of the TPNA in this fun-filled event.--*Rebecca Watson, TPNA Vice President*

## Easter Bunny Visits Tyler Park



On Saturday, March 30th over one hundred children, aged toddler through twelve years, gathered in Tyler Park for the annual TPNA egg hunt. At noon, with sirens blaring the Easter bunny roared into the park to greet the crowd in a shiny red fire engine driven by the Louisville Firefighters from the 4<sup>th</sup> District Headquarters at Rubel and Winter Avenues.

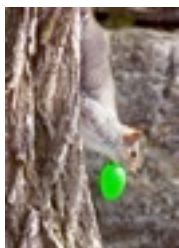


As TPNA Board member, Kathey Schickli, announced the start of the hunt, the children raced through the park to search for the 800 candy-filled eggs. Two eggs in each age group were designated for special prizes. Finders of the prize eggs included Eleanor Johnson, Owen Dalle, Amiyah Spencer, Dylan Saltzman, Grace Roberts, Sarah Drexler, Lucy Maggard, and Jake Maggard. Macy of Edgeland Avenue won the drawing for the grand prize—a giant, fuzzy duck.



A raffle was held for a gorgeous Easter bonnet designed by Kathey Schickli. Winner Eva (Princeton Drive) looked adorable sporting her stylish chapeau. Even the adults had a chance to join in the fun. Two dozen freshly laid eggs, courtesy of Manny Carralero (and his famous Mossrose hens), were donated for a second raffle. Proceeds from the raffles, as well as many generous donations by the parents, helped to offset the expenses.

Thanks to the firefighters, TPNA Board members, the Metro Parks Department, and all who participated, for making this year's hunt such a great event.--*Rebecca Watson, TPNA Vice President*



## WANTED FOR TBUT

*(theft by unlawful taking)*

*Suspect was last seen Saturday, March 30<sup>th</sup> heading west, on foot, toward the Tyler Park bridge. Do not attempt to apprehend. Anyone with information regarding this theft should notify the LMPD or the Easter Bunny.*

# AMERICAN FAMILY ORTHODONTICS

Braces For Kids & Adults

Michelle Brammer, DMD  
*Orthodontic Specialist*

502.239.9070

1815 Bardstown Rd.  
(the top floor of Dental works office)

www.afobraces.com



\$350 OFF\*

full treatment with this ad  
\*see restrictions on app.

We Make it Easy to Smile!

# Planting the Future

On April 12 nearly 200 schoolchildren came to Tyler Park in a ceremony of remembrance and hope, dedicating 26 redbud trees in memorial to the 26 victims of the shootings last December in Newtown, Connecticut. The children were there because a classmate had originated the idea, and the community had responded.

The children were from the fourth grades at Bloom, St. Agnes, and Louisville Collegiate and the fifth and sixth grades at St. James. Bloom's contingent of roughly 100 children and teachers came down Baxter Avenue to the northern edge of the park, where a bagpiper joined them, playing *The Wearing of the Green* as the group followed the new walkway down to the viaduct. The children from the other three schools had in the meantime assembled at the corner of Tyler Park Drive and Edenside Avenue. When the first song ended, a second piper began *The Green Hills of Tyrol* and started a procession toward the viaduct and the waiting group from Bloom.

With all four schools in line, the pipers then stepped through the archway playing *Scotland the Brave*, and marched along the wooded slope on the northern side of the lower park, where crews from the Olmsted Parks Conservancy had planted the trees that morning.

Doug Proffitt, anchorperson for WHAS TV 11, provided commentary on their progress for the residents, government officials, and other representatives who had gathered to witness the event. In his role as Master of Ceremonies, he explained how Henry Helmers, a fourth grader at Bloom Elementary, had started the idea and how our neighborhood association, the schools, the Parks Department and other government bodies, and the Conservancy had followed through.

Mayor Greg Fischer addressed the crowd and presented a plaque to Henry, who stepped to the podium with his own remarks, that "the best ideas can come from kids if grownups will listen. There are no boundaries to what kids can do".

His schoolmates, accompanied by the pipers with *The Rowan Tree*, then stepped forward to deliver their valedictory messages. The messages were written on strips of construction paper, to be left with the trees.

Metro Council Member Tom Owen made the formal dedication and requested a moment of silence. The bagpipers closed the ceremony with a moving rendition of *Amazing Grace*.

The focus of this story is properly on school-children. A ten-year-old boy originated the idea, and the 200 young students who wrote the notes will carry the memory of this day forward. The story is not complete, however, without mention of the supporting cast:

- ◆ Metro Parks Planning and Design chose where the trees belonged; the Operations staff made sure our park was at its best on the day of the ceremony.
- ◆ The Olmsted Parks Conservancy chose the nursery that supplied the trees, and ensured they were planted correctly.
- ◆ Louisville Pipe Band members Anne Marie De Zeeuw and Karen Brumley selected and played our bagpipe songs.
- ◆ All four schools contributed the time and effort of their administrative and teaching staffs, students and the students' families before, during, and after the event.
- ◆ Several government departments and officials provided support; State Senator Morgan McGarvey and Representative Jim Wayne attended the ceremony but chose to remain in the audience, as did neighbor Brooke Pardue, who represented Congressman John Yarmuth, in session that day in Washington.

Finally, credit also goes out to "viewers like you" – the residents, businesses, and visitors who have supported TPNA through the years. Your membership dollars and contributions to the Association and its Tyler Park



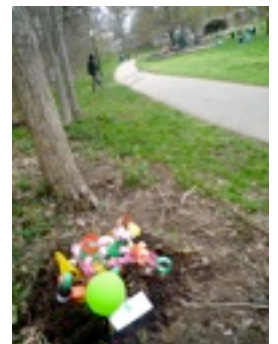
Fund paid for the trees and their planting and the incidental expenses of the event. Thank you.--Ray Brundige, TPNA Board

**Tom Owen's Remarks**--After time for growth and then for decades to come, spring blossoms from these twenty-six redbuds will remind us of the tragic death of innocents at Newtown in 2012. But a memorial is usually much more than a place for simple recollection of past achievement or in this case an overwhelmingly sad event—a memorial is a place where we also get inspiration for the future.

SO HERE for generations to come among spring blossoms in Tyler Park we will REMEMBER but we will also RENEW our determination:

- TO settle our disputes through talking rather than fighting and hurting
- TO try to get lonely people the help they need before they hurt themselves or someone else
- TO live each day as a precious gift
- TO understand that "Community" means

"ALL OF US" AND  
--TO learn over and over that our talents are nothing to hoard but are spring blossoms to spread forth for the COMMON GOOD.



## Who Was Here?

By Ray Brundige, TPNA Board

Louisville is a city of roots. Natives start their acquaintances by talking about where they went to high school, and use long-past landmarks for directions. Members of our tribe understand “turn left where the White Castle used to be”.<sup>1</sup>

Our roots lie in landmarks like the onetime White Castle, in our the park and its bridge, in the fine old buildings we try to preserve., and in the actual roots of the neighborhood trees and gardens. Some of our families have roots that stretch back in the area long before the city grew. For all of us, native or newcomer, the strongest roots are with the neighborhood’s people. They, and methods for identifying them, are the focus for this article.

My personal method for tracing roots, both for genealogy and general history, is an ambling kind of exploration I call “directed serendipity”. The explorer starts toward some place, time, and subject – the directed part – and observes small points along the way – the happy discoveries of serendipity. For example, in a quest to find when my house was built, I found two human interest stories about the people on my street.<sup>2</sup>

I had started on the quest because property records list 1906 as the year my house was built and that had seemed too early for the street. As I had found in earlier research on local history, its roadway had been transferred to the city in deeds between 1904 and 1906 and its infrastructure had been created by ordinances from 1908 to 1916.

Still, 1906 was the official year entered in the county’s carefully maintained records. Since they had gone through automation, however, the year had likely been on a printed form and then translated for entry to the computers. So *year built* is likely to be the year that was on the first record that showed taxes assessed on a house at the property, or the year taken from the date on a building permit, or some other translation of some other clerical entry.

A lack of definite information on what the year did mean turned the quest toward the most obvious sources: the deeds.

Deeds rarely mention houses, except by referring to “any improvements” that happen to be on the land. As the legal roots of property ownership, however, each describes a property and a transaction and identifies the parties who are involved. So even if these obvious sources fail to pinpoint the year the house appeared, the information they hold will advance the quest.

Which continues through the use of two indexes kept by the County Clerk. One index has the names of those who conveyed property rights (“grantors”). The other holds the names of those who received the rights (“grantees”). To find a past owner, look for current owner’s name in the grantee index; the name will be on a line that also shows the book, page, and year for the deed. Go to the correct page for the correct book and read the deed. It should identify the deed for the previous sale.<sup>3</sup>

Jefferson County has an online system to retrieve deeds and other land records using the grantee and grantor indexes, but it only has full records from 1992. Going farther back requires visiting the deed room on the second floor of the Metro Hall downtown and searching manually.

For a single property in the modern records, the manual searches work quickly. I was able to trace my property through seventeen deeds, to 1910, in less than two hours.

Before that, searches are much slower. Just after the turn of the Twentieth Century, the land near our homes went from farmers to developers, who subdivided the properties with considerable enthusiasm. Tracing the first 103 years, to 1910, took seventeen deeds. Tracing the next four, to 1906, took sixteen deeds. Every deal changed the size and shape of the properties and points of reference in the descriptions. Meanwhile, the developers carved off pieces to dedicate to public use as the new blocks of Edgeland Avenue and the adjoining alleys.

When the deed search did not produce any mention of a house, my quest shifted to searches for tax records and building permits.

The detailed tax records that could prove the house existed have themselves proved elusive. We have household property lists from the early

frontier and massive databases from more recent times, but between 1892 and 1954, the period where my quest needs to go, the old tax records are not available. It is in my nature that I will keep idly poking at that gap, but as of the time this is written, I have not found them.

The ones that were saved are being kept at the Metro Archives and Records Center or the Kentucky Department of Libraries and Archives in Frankfort. Both organizations have amazing repositories of old government documents, and both suffer from inconsistent policies over the years at the agencies that created the documents. Their collections are a hodge podge of whatever someone managed to save as the years went by.

As an example, consider building permits. Louisville had a Department of Buildings, which issued permits for construction within city limits. In 1972, a few original permit books traveled to Frankfort: building permits for the years 1877, 1878, 1902, 1903, 1906, 1908, and 1910; and plumbing permits for 1909 and 1927. If those years sound familiar, your permit might be in Frankfort. Otherwise, it probably does not exist. Permits are now kept for five years and no old copies are kept in the current agencies.

We are now in the final stretch, where, rather than looking for a building, we look for a person residing at an address. The best tool to trace those roots is a publication called *Caron’s*, a city directory available at the library and at the University of Louisville (the more complete set). A wonderful feature of *Caron’s* is the criss-cross directory showing the households on each street.

All of the residents on Edgeland were on the other side of Bardstown until 1907; by 1909 my side had more than forty households, but all the addresses were in the 1600’s, more than twice as many as now. The houses were renumbered in stages, taking the current form by 1910. My own house started as number 1614, occupied by a man named Edward H. Fowler.

As for the year my house was built, the quest ends with a guess that a building permit was issued in ’06; the house was finished and probably occupied by the end of 1907, too late to include in that directory. Mr. Fowler was at 1614 Edgeland Avenue in the 1908 *Caron’s*, found at the U of L archives. -- © 2013 Ray Brundige



**Saint James School**

**SCHEDULE A TOUR TODAY!**

**Pre-School - 8th Grades**  
454-0330 x 11

*A Culture of Excellence*  
*Where Each Child Thrives*

## The Jewel Box

Old timers in the Highlands will remember The Jewel Box as one of the original businesses when the Mid-City Mall opened in October 1962. In those days, it was a small kiosk in the concourse. The original owner was a watchmaker. The current owner, Les Miller bought the business in 1981 and enlarged the storefront in the middle of the mall in 1986. Les Miller grew up in the Highlands on Rutherford Ave. He and his wife were the first couple to be married by Rabbi Kling at Adath Jeshurun.

The Jewel Box specializes in selling vintage jewelry. Mr. Miller attends annual shows in Las Vegas and Miami where he gathers some treasures.

The Jewel Box is open five days per week from 10 A.M. till 5 P.M. - closed on Wednesday and Sunday.

Next time you visit the mall, stop in to thank Les Miller for serving our neighborhood for many years. Better yet, give him some business by having your watch or ring repaired or purchasing some vintage jewelry at The Jewel Box. --- Stan Esterle, TPNA Board



[www.tylerpark.org](http://www.tylerpark.org)

January 2013

page 5



## June-August 2013 Programs

### Highlands-Shelby Park Branch Library

Highlands-Shelby Park Friends of the Library Meeting, Monday, June 10, 7 p.m.

Highlands-Shelby Park Friends of the Library Book Discussion, Monday, June 10, 6 p.m.

### Children's Programs, May-August 2013

**Heidi Howe**, Wednesday, June 12, 2 p.m.

Children and adults participate with singing, moving, clapping and call-and-response songs. For children up to age 7 and their parents/caregivers.

**Science Club**, Wednesday, June 26, 2 p.m.

Make projects that fly or float. Ages 5-10  
Call 574-1672 to sign up.

**Cooking with Ms. Paula**, Wednesday, July 3, 2 p.m.

Create a scrumptious surprise. Ages 5-10  
Call 574-1672 to sign up.

**Mad Science**, Wednesday, July 10, 2 p.m.

Black and Blue Oceans. Ages 5-12  
Call 574-1672 to sign up.

**Science Club**, Wednesday, July 17, 2 p.m.

Make projects that are sticky or slimy. Ages 5-10  
Call 574-1672 to sign up.

**Louisville Water Company**, Wednesday, July 24, 2 p.m.

Hands-on learning activity about water. Ages 4-8

**Second Chances Wildlife**, Wednesday, July 31, 2 p.m.

Co-existing with Wildlife. All ages

**Zany Brainy Magic Show with Steve-O**, Saturday, August 10, 2 p.m.

Enjoy our Summer Reading Finale with entertainment, refreshments, and crafts. All ages

### Teen Outpost Programs June-August 2013

**School's Out Party**, Thursday, June 6, 1 pm

The Outpost's summer hours start today! Stop by for snacks and music.

**4H Kitchen Science**, Wednesday, June 19, 3 pm

Join 4H in the Outpost for some fun kitchen science. Ages 12 - 19

**Science Fridays**, Friday, June 7, 21 and 28, 2 pm

Drop by the Outpost to try your hand at some fun experiments.

**Jitterbugs**, Thursday, July 18, 3 pm

Join us at the Outpost to make a jitterbug robot from an old CD.

Space is limited. Please call 574-1672 to sign up. Ages 12 - 19

**Science Fridays**, Friday, July 12, 19 and 26, 2 pm

Drop by the Outpost to try your hand at some fun experiments.

### Mark your calendar and plan to attend:

Tyler Park Garden Tour  
Saturday, June 15th, 9:30-3:30

Sundays in September: the 8th, 15th, 22nd, 29th  
Jazz in Tyler Park, 4-6 pm

TPNA Meeting, 4th Thursdays, 7-9 pm  
at the library in the Mid City Mall

Tyler Park Clean-Up Volunteers Needed  
Saturday mornings, 10-12  
September 14 and November 2

Keep up-to-date with your neighborhood!  
Check out [www.tylerpark.org](http://www.tylerpark.org) regularly!

**Charge an iPod with Fruit**, Thursday, August 8, 3 pm  
Drop by the Outpost with your iPod and USB charger and we'll see if we can charge it with fruit.

### Adult Programs:

Lightning Safety Awareness Week, June 24-29

Call 574-1672 for dates and times

### Computer Classes:

Computer Basics and Internet Basics, by appointment

Call 574-1672

### 160 popular Magazines are now available FREE online with your library card.

Titles include Consumer Reports, Martha Stewart Living, The Economist, Newsweek and Rolling Stone – just to name a few. Visit [www.lfpl.org/eMagazines](http://www.lfpl.org/eMagazines) to learn more.

## Summer Reading Program at the Library



The Summer Reading program at all the Louisville Free Public Library starts Saturday, June 1<sup>st</sup> with a big kickoff at the Main Library downtown from 10:30 a.m. to 12:30 p.m. The Summer Reading program lasts through Saturday, August 10<sup>th</sup>.

The **children's program** is for ages birth through 5<sup>th</sup> grade. Starting June 1<sup>st</sup>, pick up a reading sheet at any of the Louisville Free Public Libraries. All you do is **1.** Read 10 books. **2.** Write the titles on the sheet. **3.** Turn in your sheet at any of the Louisville Free Public Libraries and win all of the following:

- A thinking cap
- Passes to: Squire Boone Caverns, The Louisville

Science Center, Locust Grove, The Thomas Edison House, The Gheens Science Hall & Rauch Planetarium, a free showing of the Kentucky Show at the Performing Arts Center, ticket to a Bats Game, 2 weeks of free lessons from Hwang's Martial Arts, a free lemon ice at Fazoli's, a free Wendy's Frosty, free passes to U of L sporting events

- Plus a chance to win more prizes with our drawing for a \$500 family shopping spree at Barnes & Noble

The **teen program** is for grades 6<sup>th</sup> through 12<sup>th</sup>. Starting June 1<sup>st</sup> pick up a teen reading sheet and then **1.** Read six books and choose one activity listed on the sheet. **2.** Write the titles and check off the activity on the sheet. **3.** Turn in your sheet at any of the Louisville Free Public Libraries and win all of the following:

- A messenger bag
- Passes to: Squire Boone Caverns, The Gheens Science Hall & Rauch Planetarium, The Louisville Science Center, Squire Boone Caverns, 2 weeks of free Lessons from Hwang's Martial Arts, Ticket to a Bats Game, A free lemon ice at Fazoli's, A free Wendy's Frosty, Free passes to U of L sporting events

- Plus a chance to win \$100 individual shopping spree at Barnes & Noble

For more information about upcoming programs at the Highlands-Shelby Park Library call 574-1672 or visit the Library's website at [www.LFPL.org](http://www.LFPL.org).

**TERRY HALL REDDEN**  
Realtor / Broker

**Semonin**  
REALTORS

Residence: 502-454-5795  
Voice Mail: 502-736-5742  
Fax: 502-471-5487  
Email: [tredden@semonin.com](mailto:tredden@semonin.com)  
[TerryRedden.semonin.com](http://TerryRedden.semonin.com)

# Tyler Park Champions



“Hey, it’s spring again. Great! School is almost out and I get to go play in Tyler Park!”

I always looked forward to playing with my friends at the park. In the summer of 1948, the Louisville Parks had a recreation department and always had a program for the kids. That year they organized a softball team for twelve-year-olds. We were going to play all the other park teams.

I remember it well. I played first base. I don’t remember all the boys on the team but I remember two of them. One is a dentist here in Louisville and the other one went to Hollywood. We would go around town and play the other park teams. At the time, I didn’t know we had so many nice parks. Its was a thrill to see them all.

As the summer went by we were winning almost all the games and we finally got to play for the city championship. You played one game and that was it--not two out of three or anything like that. So the game is against the park in Portland. We played seven innings on their home field. The score was tied in the seventh inning and I got a hit and made it to second base. My friend, who later in life went to Hollywood, also got a hit and we won the game. We were city champs of the twelve-year-old boys softball team!

As we were leaving the Portland park there were a few boys on the Portland team who were not very happy about the loss and were yelling at us and saying some “not very nice things.” Our coach grabbed us up and told us all to get on the bus. We went back to Tyler Park and celebrated our victory.

Just one of my fond memories of playing in Tyler Park every summer. --  
*Patrick Payne, formerly of Deer Park Avenue*

**Editor’s Note:** *We were delighted by Mr. Payne’s letter, and did some research to gather background. Our quest failed, though, as the 12-year-old softball league was overshadowed by professional baseball (Cleveland won the series that year). The city’s annual report on recreation programs had very few pictures until 1951 – 1952. The report for that year had the Junior Baseball picture, reproduced above. The picture was probably not from Tyler Park, although we did have a softball diamond in the lower park at that time. We are sure the image is much fresher in Mr. Payne’s memory.*



## More Good News About Membership!!! But . . . Continued and Financial Support is Still Needed

TPNA membership grew last quarter by 10 members. Our totals are 18 businesses and 264 individual/family members. Roughly ¼ of our residents are dues-paying members. The 2013 membership goal is to reach 300 total numbers of members, meaning we need to add 18 new members while maintaining all current members or replacing any current members who move or do not renew. After discussion, the Membership Committee decided upon a mail blitz of the newly-designed membership brochure (slated for publication in June) to residents who are not members instead of a door-to-door membership campaign. The cost to print the needed

membership brochures will be about \$330. To ensure better recognition, the address labels for non-members have been changed. Instead of last name only being printed, the last name is followed by the first name in parentheses. Information was found by searching all Tyler Park addresses on the PVA database by Janet Dakan.

The membership dues surplus of \$354 reported in the Spring 2013 newsletter will cover part of the cost of the printing of the spring newsletter of \$612 leaving \$258 to be covered by this quarter’s dues. Given the figures below, an estimated \$914 has been collected leaving \$656 after paying the remainder of the printing costs. Thanks to Ted & Dawn Sandquist, Michael & Nancy Breitenstein, John & Julia Robbins, Trudi Kubik, Cindy Read & Chip Nold, Karen Ryan Harris, and John D. Reilly, Jr. who contributed a total of \$80 above the cost of the membership dues, we are able to contact non-renewing members by mail several times before making those time-consuming phone calls.

No new businesses have joined since the Spring 2013 newsletter. Philip W. Barber, DMD and Sandy Metts / Mid-City Mall renewed. Recurring members are Highland Coffee Company, Keith’s Hardware, Heine Brothers’ Coffee, Arts & Craft Dental, Fairleigh Pet Center, The Back Door, Gabor S. Vargo, DMD, Louisville Federation of Musicians Local No. 11-637, Boombozz Pizza & Tap House, St. James Church, Kizito, Highland Morning, Edenside Gallery, Barret Liquor, Louisville Jazz Society and Charles Williams Design. RECOGNITION: HIGHLAND MORNING was just awarded Urban Spoon’s (Nation’s largest website for restaurants) Top 101 Great Breakfasts in America 2013.

10 individual/family residents joined: Bill Falvey, Keller & Therese Riede, Margie Clark for two years, Jack Anthony, Virginia Lee, John Roberts, Deborah A. Hino & Clyde Brown, Jeffrey Scheurich, Doug & Chunye Brown, and John D. Reilly.

60 individual/family renewing members were: Jim & Randi Grissom, William J. Labate, Brian Caudill, Ted & Dawn Sandquist, JoAnne Fischer, Kathleen Haley, Brian & Kate Chandler, Sara Rose, David & Katie Krebs, Forrest & Patricia Land, Phyllis Beamer, Matthew & Jaclyn Bartol, Wilkerson Family, Nancy Trabue & Don Jenkins, Ron & Michele Smith, Mike Miller & Carolynn Foster, Kimberly S. Naber, Laurel Sedgwich, Drew & Lisa Duncan, Therese & David Hinton, Jeanette & Andy Westbrook, Sarah Lynn Cunningham for 2 years, Jimmy Brown & Mary Jane Aboud, Anita Chambers, Jeane Hanley & Patti Bell, Alice Vardiman, Scott Beldon & Matt Rummele, John & Heather Grossman, Tony & Sally Hattermer, Ralph Fort, Cissy & Ralph Mills, Mary Julia & Forrest Kuhn, Robert & Karen Zriny, McGeeney Family, Megan Robison, Michael & Nancy Breitenstein, Marcelle T. Gianelloni & C.J. Pressma, John & Julia Robbins, Rudy & Jo Ann Mosier, Joseph & Kathleen Kremer, Will Nefzger, James & Rebecca Watson, Florence & Lary Saltzman, Gary & Trudy Fischer, Rose Mary Toebe, Betty Paterson, Katy Schneider, Herman & Gail Harrington, Michael & Jan Hyland, Betty Long, Trudi Kubik, Cindy Read & Chip Nold, Melanie Chilton, Julie E. Purcell, Karen Ryan Harris, Drew & Katie Case, Robert C. Hunt & Marlene Pennington, Cory Nett, Mike Gramig, Tucker & Martha Thomas and Paul & Denise Stine.

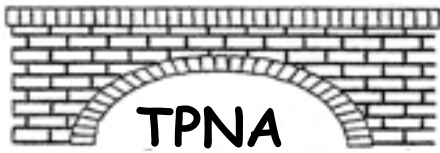
Donations to The Tyler Park Fund were down to 1 (Thanks, Doug & Chunye Brown) from 5 in the Spring Newsletter.

The membership committee has good news – Emily Renda has joined us and has had a creative impact already. Other members include Judy Behanan, Ray Brundige, Denis Hommrich, Andrea McElderry, Julia Robbins, and Janet Dakan, chair. Follow Emily’s lead and join us. We could use your help! –Janet Dakan, Membership Committee Chair

# InTENSity Fitness

**Helping You Achieve Your Own Personal 10!**

**[www.InTensityFitness.com](http://www.InTensityFitness.com)  
(502) 314-0245**



# Join Your Neighborhood Association

## Memberships

Individual and Family dues \$12 per year  
Business dues \$25 per year

## Donate to The Tyler Park Fund

Please write separate checks for donations and dues.

Dues should be written to TPNA, Inc.

Donations to The Tyler Park Fund

Mail check/s and form to:

TPNA, PO Box 4452, Louisville KY 40204

Name: \_\_\_\_\_  
Address: \_\_\_\_\_  
Apt. #: \_\_\_\_\_ Zip: \_\_\_\_\_  
Home Phone \_\_\_\_\_  
Cell Phone \_\_\_\_\_  
E-mail: \_\_\_\_\_  
Let us know about new or changed emails for our eblast alerts.

## READ YOUR MAILING LABEL!!!!

### I/we would like to work on the following:

- Park Master Plan \_\_\_\_\_
- Winter Event TBA \_\_\_\_\_
- Garden Tour \_\_\_\_\_
- Membership \_\_\_\_\_
- Zoning and Enforcement \_\_\_\_\_
- Park Cleanup \_\_\_\_\_
- Board of Directors \_\_\_\_\_
- Newsletter Ad Manager \_\_\_\_\_
- Tyler Park Green Initiative  
Walkability Survey \_\_\_\_\_
- Tree Conservation \_\_\_\_\_

**YOU ARE NOT A MEMBER:** 1) There is no date appearing next to your name; or 2) The membership date that appears next to your name is 00-00. TPNA needs your financial support for our activities including the publication and mailing of the newsletter so please join now. Submit this form and your check to the above address.  
**YOU ARE A MEMBER:** 1) Your first & last name appears on the label followed by a date (month and year). The date is your renewal date or when your membership is due. Since mailing costs have increase, TPNA no longer sends acknowledgement thank you cards for membership dues. If you must have one, please contact Janet Dakan at the number below or write a note to the address above.  
**If the information on your label is wrong,** please print the correct information on this form & mail it back to the address listed above so that I can correct your information for the next newsletter. Thanks for your support and help.

--Janet Dakan, Membership Committee Chair (502) 727-6856

Please support all of TPNA's advertisers

Sundays  
September 8th, 15th,  
22nd, and 29th  
from 4-6 pm  
in Tyler Park



TPNA Garden Tour  
Saturday, June 15th  
9:30-3:30  
Start at the Mid-City Mall

NONPROFIT ORG  
U.S. POSTAGE  
PAID  
LOUISVILLE, KY  
PERMIT NO. 1549

Tyler Park  
Neighborhood  
Association  
PO Box 4452  
Louisville KY 40204